

LOC I-LPV 110.3	APP CRS 174°	Rwy Idg TDZE Apt Elev	9001 32 33
---------------------------	------------------------	-----------------------------	---------------------------------------

ILS Z or LOC Z RWY 17R

ELLINGTON (EFD)

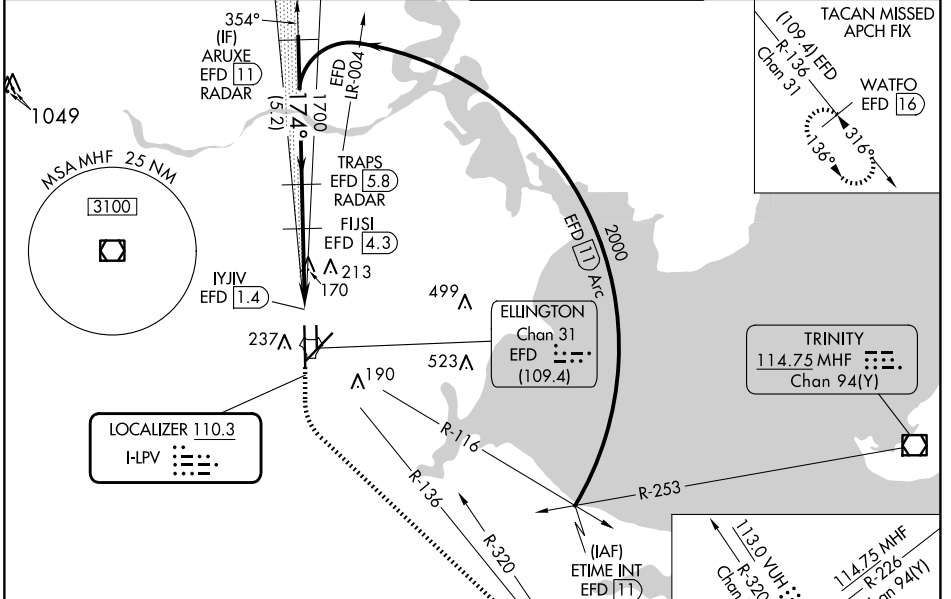
DME required. RADAR required for procedure entry.

⚠ Circling NA west of Rwy 17R-35L. DME from EFD TACAN.
⚠ Simultaneous reception of I-LPV and EFD DME required. Inop table does not apply to S-ILS 17R. For inop ALS, increase S-LOC 17R Cats C/D/E visibility to 1 3/8 SM.

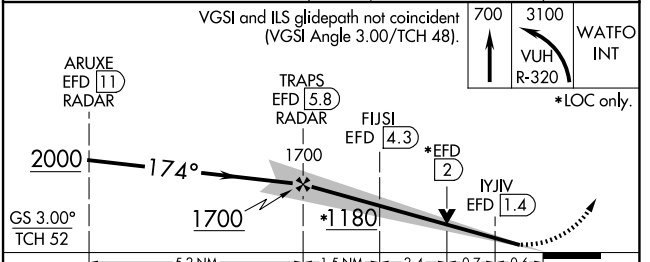
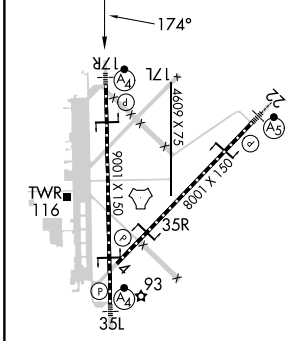
MALSIF

MISSED APPROACH: Climb to 700 then climbing left turn to 3100 on VUH VOR/DME R-320 to WATFO INT/VUH 9.3 DME and hold (TACAN aircraft climb to 700 then climbing left turn to 3100 on EFD TACAN R-136 to WATFO INT/EFD 16 DME and hold southeast, left turn, 316° inbound).

ATIS 135.575 269.9	HOUSTON APP CON 134.45 284.0	ELLINGTON TOWER 126.05 253.5	GND CON 121.6 275.8
------------------------------	--	--	-------------------------------



ELEV 33	D	TDZE 32
---------	----------	---------



CATEGORY	A	B	C	D	E
S-ILS 17R	232/40 200 (200-3/4)				
S-LOC 17R	480/40	448 (500-3/4)	480/55	448 (500-1)	
C CIRCLING	500-1	467 (500-1)	580-1 1/2 547 (600-1 1/2)	640-2 607 (700-2)	700-2 1/4 667 (700-2 1/4)

SC-5, 15 MAY 2025 to 12 JUN 2025

SC-5, 15 MAY 2025 to 12 JUN 2025