

(INDIE8.INDIE) 21280

AL-197 (FAA)

ELLINGTON (EFD)
HOUSTON, TEXAS

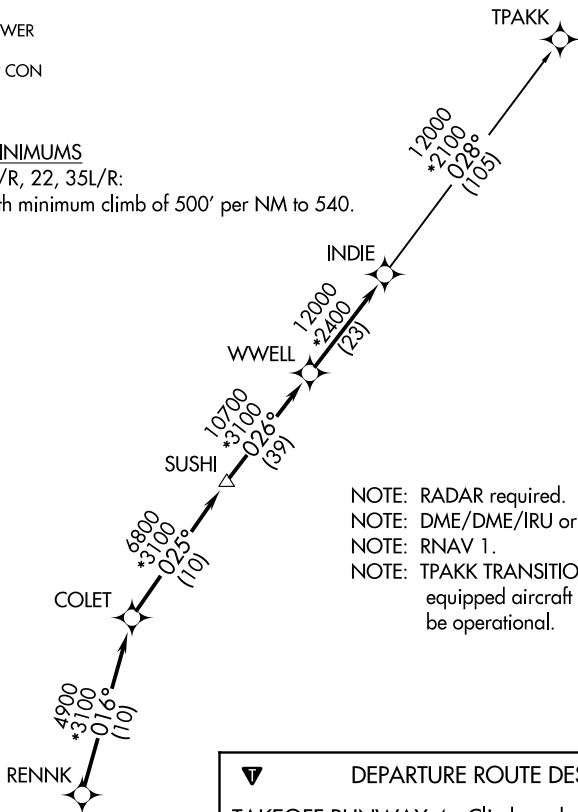
INDIE EIGHT DEPARTURE (RNAV)

ATIS
135.575 269.9
GND CON
121.6 275.8
ELLINGTON TOWER
126.05 253.5
HOUSTON DEP CON
134.45 284.0

**TOP ALTITUDE:
ASSIGNED BY ATC**

TAKEOFF MINIMUMS

Rwys 4, 17L/R, 22, 35L/R:
Standard with minimum climb of 500' per NM to 540.



- NOTE: RADAR required.
- NOTE: DME/DME/IRU or GPS required.
- NOTE: RNAV 1.
- NOTE: TPAKK TRANSITION: For non GPS equipped aircraft TNV DME must be operational.

DEPARTURE ROUTE DESCRIPTION

TAKEOFF RUNWAY 4: Climb on heading 039° to 540 for RADAR vectors to RENNK, thence

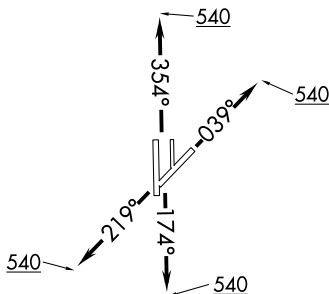
TAKEOFF RUNWAYS 17L/R: Climb on heading 174° to 540 for RADAR vectors to RENNK, thence

TAKEOFF RUNWAY 22: Climb on heading 219° to 540 for RADAR vectors to RENNK, thence

TAKEOFF RUNWAYS 35L/R: Climb on heading 354° to 540 for RADAR vectors to RENNK, thence

. . . . on track 016° to COLET, then on track 025° to SUSHI, then on track 026° to WWELL, then on track 026° to INDIE, then on (transition). Maintain ATC assigned altitude. Expect filed altitude 10 minutes after departure.

TPAKK TRANSITION (INDIE8.TPAKK)



NOTE: Chart not to scale.

SC-5, 15 MAY 2025 to 12 JUN 2025

SC-5, 15 MAY 2025 to 12 JUN 2025

INDIE EIGHT DEPARTURE (RNAV)

(INDIE8.INDIE) 07OCT21

HOUSTON, TEXAS
ELLINGTON (EFD)