

HI-TACAN RWY 35L

TACAN EFD Chan 31	APCH CRS 002°	Rwy Idg THRE 28 Arprt Elev 33
--------------------------	----------------------	--

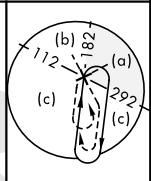
AL-197 [USAF]

ELLINGTON (KEFD)

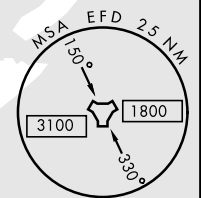
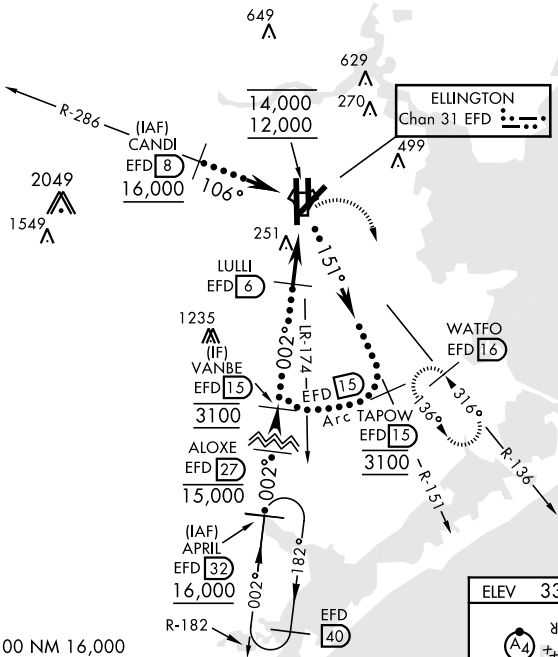
RADAR required for procedure entry		MALSF (A4)	MISSED APPROACH: Climbing right turn to 3100 on EFD TACAN R-136 to WATFO/ EFD 16 DME and hold.
* When ALS inop, increase CAT CDE vis to 1 1/2 miles. ** Circling not authorized W of Rwy 17R-35L.			

ATIS 135.575 269.9	HOUSTON APP CON 134.45 284.0	TOWER 126.05 253.5	GND CON 121.6 275.8
------------------------------	--	------------------------------	-------------------------------

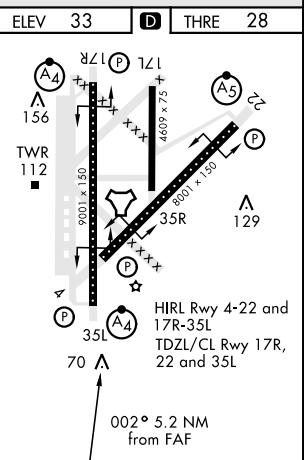
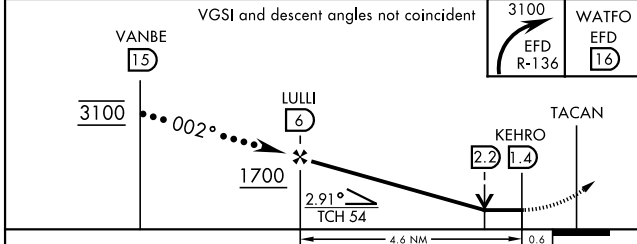
EFD TACAN	N29°36.36' W95°09.58'
CANDI	N29°39.24' W95°18.17'
APRIL	N29°04.53' W95°14.05'
WATFO	N29°23.90' W94°58.07'



Enroute penetration to 15 DME Arc available



EMERG SAFE ALT 100 NM 16,000



CATEGORY	C	D	E
S-35L *	520/60	492	(500-1 1/4)
CIRCLING **	580-1 1/2 547 (600-1 1/2)	640-2 607 (700-2)	700-2 1/4 667 (700-2 1/4)

HI-TACAN RWY 35L

SC-5, 15 MAY 2025 to 12 JUN 2025

SC-5, 15 MAY 2025 to 12 JUN 2025