

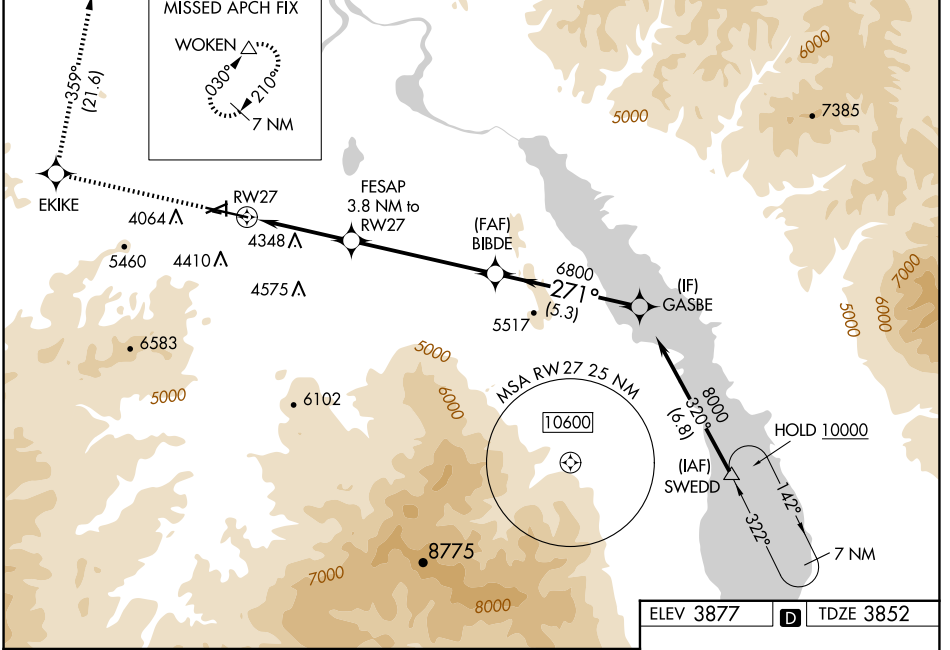
WAAS CH 69405 W27A	APP CRS 271°	Rwy Idg TDZE Apt Elev	9000 3852 3877
--	------------------------	-----------------------------	---

RNAV (GPS) X RWY 27

HELENA RGNL (HLN)

RNP APCH - GPS.	MALSRR 	MISSED APPROACH: Climb to 9400 direct EKIKE and on track 359° to WOKEN and hold.
 Circling NA to Rwy 10 and 28. For uncompensated Baro-VNAV systems, LNAV/VNAV NA below -26°C or above 54°C. Circling Rwy 5, 23, 35 NA at night. For inop ALS, increase LPV all Cats visibility to 1/2 SM. Circling NA for Cat D south of Rwy 9-27.		

ATIS 120.4	HELENA APP CON * 119.5 229.4	HELENA TOWER * 118.3 (CTAF) 257.8	GND CON 121.9	UNICOM 122.95
----------------------	--	---	-------------------------	-------------------------



9400	EKIKE	↑ Ir 359°	WOKEN				
				FESAP 3.8 NM to RWY 27	BIBDE 6800	GASBE 8000	
				3.1 NM to RWY 27	5120	6800	GP 3.00° TCH 55
				3.1 NM	0.8	5.3 NM	5.3 NM
CATEGORY	A		B		C		D
LPV DA	4501-1 $\frac{3}{8}$		649 (700-1 $\frac{3}{8}$)				
LNAV/VNAV DA	4724-2		872 (900-2)				
LNAV MDA	4880- $\frac{3}{4}$ 1028 (1100- $\frac{3}{4}$)	4880-1 1028 (1100-1)	4880-2 $\frac{1}{2}$	1028 (1100-2 $\frac{1}{2}$)			
CIRCLING	4880-1 $\frac{1}{4}$ 1003 (1100-1 $\frac{1}{4}$)	4880-1 $\frac{1}{2}$ 1003 (1100-1 $\frac{1}{2}$)	6000-3	2123 (2200-3)			

ELEV 3877 TDZE 3852

REIL Rws 9, 17, and 35
MIRL Rws 5-23 and 17-35
HIRL Rwy 9-27

NW-1, 15 MAY 2025 to 12 JUN 2025

NW-1, 15 MAY 2025 to 12 JUN 2025