

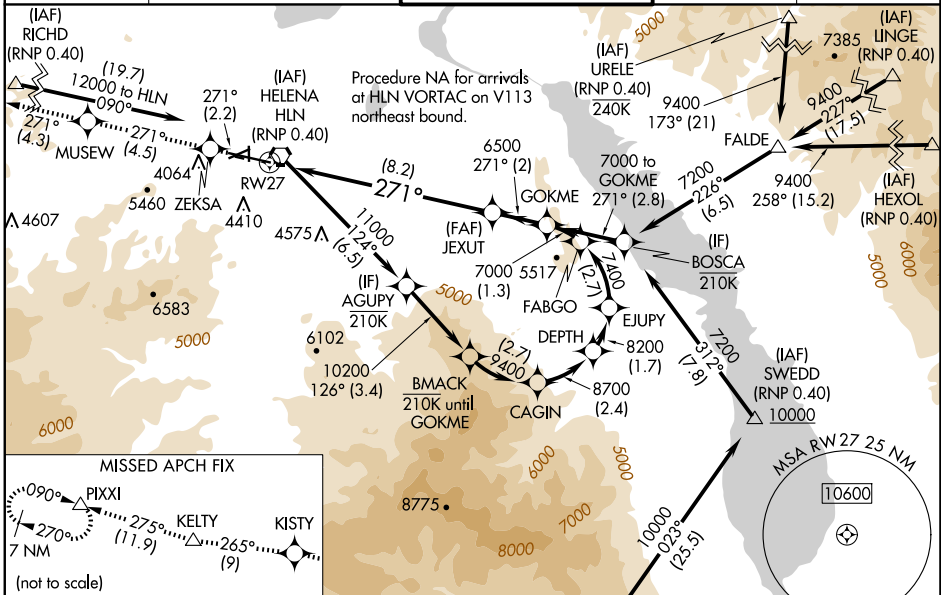
APP CRS 271°	Rwy Idg TDZE Apt Elev	9000 3852 3877
------------------------	-----------------------------	---

RNAV (RNP) Y RWY 27

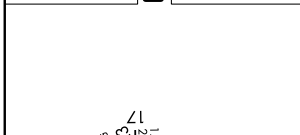
HELENA RGNL (HLN)

RNP AR APCH - GPS.	MALSR	MISSED APPROACH: Climb to 12000 on the RNAV missed approach route to PIXXI and hold, continue climb-in-hold to 12000. *Missed approach requires minimum climb of 260 feet per NM to 7900; if unable to meet climb gradient, see RNAV (RNP) Z RWY 27.
For uncompensated Baro-VNAV systems, procedure NA below -28°C or above 54°C. -17°C Missed approach requires RNP less than 1.0. For inop ALS, increase RNP 0.30 DA* visibility all Cats to 1 1/2 SM.		

ATIS 120.4	HELENA APP CON * 119.5 229.4	HELENA TOWER * 118.3 (CTAF) 0 257.8	GND CON 121.9	UNICOM 122.95
----------------------	--	---	-------------------------	-------------------------



ELEV 3877	D	TDZE 3852
-----------	----------	-----------



9440	10500	026° (18.4)	(IAF) SUZZY (RNP 0.40)	Procedure NA for arrivals at SUZZY on V343 westbound.
WHITEHALL	HIA			Procedure NA for arrival on HIA VOR/DME arrival radials 353 CW 078.

12000	ZEKSA	tr 271°	MUSEW	tr 271°	KISTY	tr 265°	KELTY	tr 275°	PIXXI	GOKME
See planview for multiple IF locations.										
			JEXUT	6500	271°	7000				
			RW27			6500				GP 3.00° TCH 55
					8.2 NM					2 NM

CATEGORY	A	B	C	D
RNP 0.15 DA*		4284-3/4	432 (500-3/4)	
RNP 0.30 DA*		4321-1	469 (500-1)	

REIL Rws 9, 17, and 35
MIRL Rws 5-23 and 17-35
HIRL Rwy 9-27

NW-1, 15 MAY 2025 to 12 JUN 2025

NW-1, 15 MAY 2025 to 12 JUN 2025