

LOC I-HLN 110.1	APP CRS 271°	Rwy Idg TDZE Apt Elev	9000 3852 3877
---------------------------	------------------------	-----------------------------	---

ILS Y or LOC Y RWY 27

HELENA RGNL (HLN)

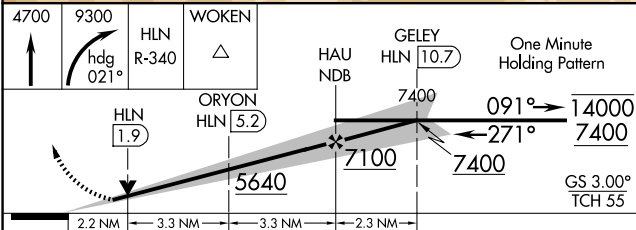
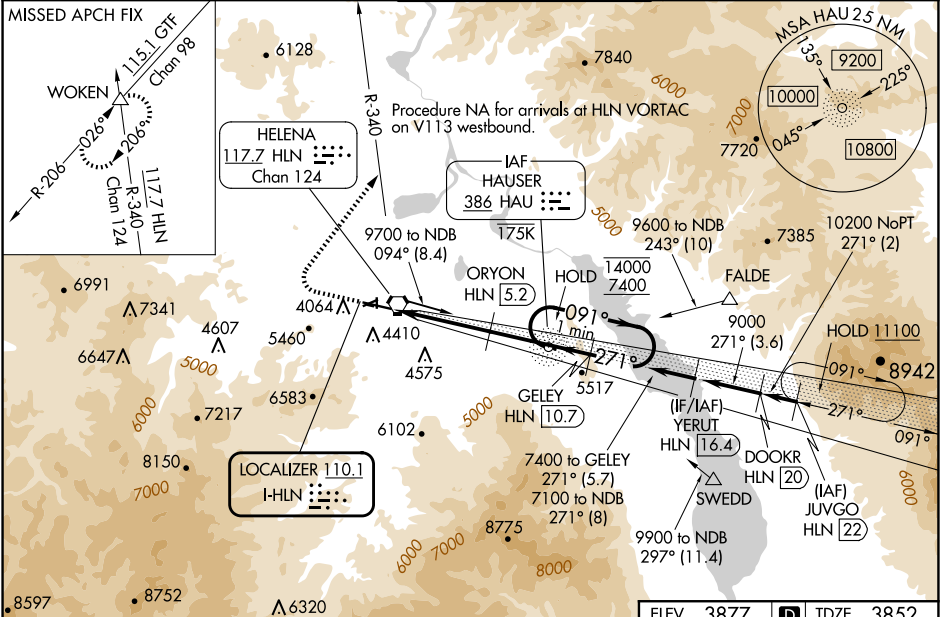
ADF or RADAR required for procedure entry. ADF or DME required.

⚠ Circling NA to Rwy 10 and 28. Circling Rwy 5, 23, 35 NA at night. Inop table does not apply to S-LOC 27 all Cats. For inop ALS, increase S-ILS 27 all Cats visibility to 1½ SM, ORYON fix minimums: S-LOC 27 Cat C/D/E visibility to 2 SM. Holding at HAU NDB authorized for Cat A and B aircraft only. Circling NA for Cats D and E south of Rwy 9-27.
*DME from HLN VORTAC. DME use requires simultaneous reception of I-HLN and HLN DME.

MALSR
AS

MISSED APPROACH: Climb to 4700 then climbing right turn to 9300 on heading 021° and on HLN VORTAC R-340 to WOKEN INT and hold, continue climb-in-hold to 9300.

ATIS 120.4	HELENA APP CON * 119.5 229.4	HELENA TOWER * 118.3 (CTAF) 0 257.8	GND CON 121.9	UNICOM 122.95
----------------------	--	---	-------------------------	-------------------------



CATEGORY	A	B	C	D	E
S-ILS 27	4496-1½ 644 (700-1½)				
S-LOC 27	5640-1¼ 1788 (1800-1¼)	5640-1½ 1788 (1800-1½)	5640-3 1788 (1800-3)		
C CIRCLING	5640-1¼ 1763 (1800-1¼)	5640-1½ 1763 (1800-1½)	6000-3 2123 (2200-3)		
ORYON FIX MINIMUMS*					
S-LOC 27	4600-½ 748 (800-½)	4600-¾ 748 (800-¾)	4600-1¾ 748 (800-1¾)		
C CIRCLING	4640-1 763 (800-1)	4800-¼ 923 (1000-¼)	6000-3 2123 (2200-3)		

ELEV 3877 **D** TDZE 3852

One Minute Holding Pattern

REIL Rwys 9, 17 and 35
MIRL Rwys 5-23 and 17-35
HIRL Rwy 9-27

FAF to MAP 8.7 NM

Knots	60	90	120	150	180
Min:Sec	8:42	5:48	4:21	3:29	2:54

NW-1, 15 MAY 2025 to 12 JUN 2025

NW-1, 15 MAY 2025 to 12 JUN 2025