

LOC I-MDT 110.9	APP CRS 128°	Rwy Idg 8070 TDZE 308 Apt Elev 310
---------------------------	------------------------	--

ILS RWY 13 (CAT II & III)

HARRISBURG INTL (MDT)

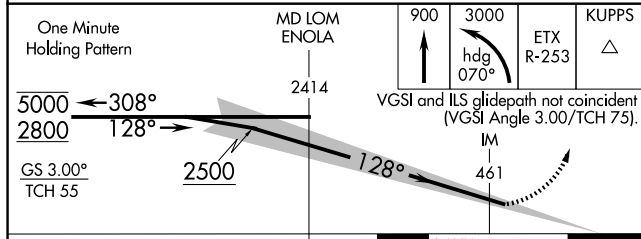
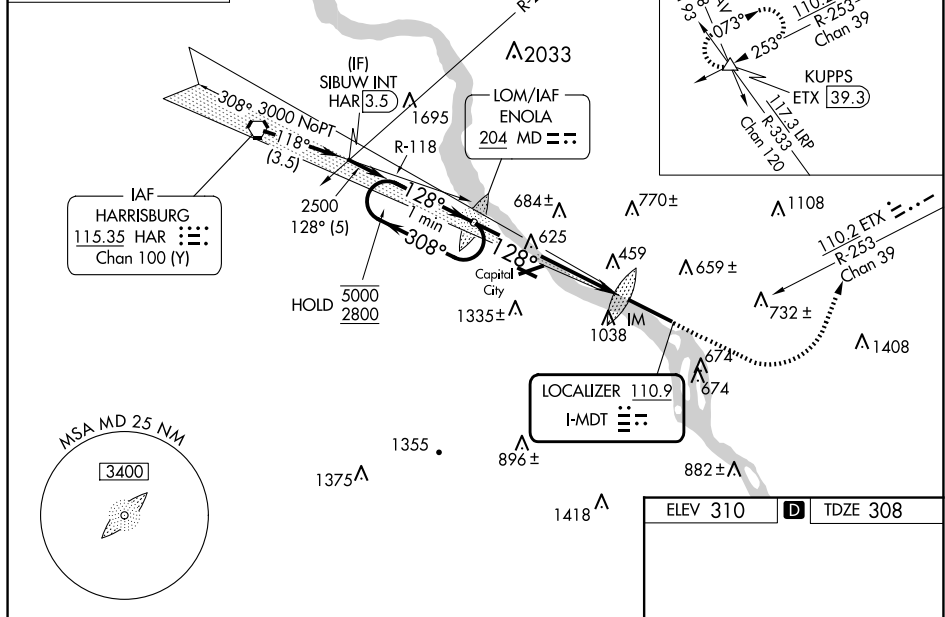
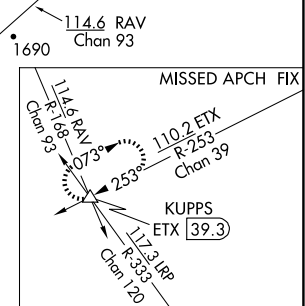
CAT II: RVR 1000 authorized with specific OPSPEC, MSPEC, or LOA approval and use of autoland or HUD to touchdown.

MISSED APPROACH: Climb to 900 then climbing left turn to 3000 on heading 070° and on ETX VOR/DME R-253 to KUPPS INT/ETX 39.3 DME and hold.

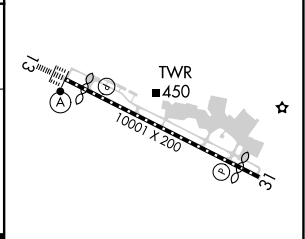
ATIS 118.8	HARRISBURG APP CON (080°-179°) 126.45 281.525 (180°-329°) 124.1 273.525 (330°-079°) 118.25 269.45	HARRISBURG INTL TOWER 124.8 269.35	GND CON 121.7 348.6
----------------------	---	--	-------------------------------

ALTERNATE MISSED APCH FIX
HARRISBURG HAR **115.35**
Chan 100 (Y)

Procedure NA for arrival on HAR VORTAC airway radials 102 CW 157 and at HAR VORTAC on V12 eastbound.



ELEV 310	TDZE 308
----------	----------



CATEGORY	A	B	C	D
S-ILS 13	CAT II RA 100/12 100 DA 408			
S-ILS 13	CAT III		RVR 06	

CATEGORY II & III ILS - SPECIAL AIRCREW & AIRCRAFT CERTIFICATION REQUIRED

TDZ/CL Rwy 13
REIL Rwy 31
HIRL Rwy 13-31

NE-4, 15 MAY 2025 to 12 JUN 2025

NE-4, 15 MAY 2025 to 12 JUN 2025