

# TACAN Y RWY 8

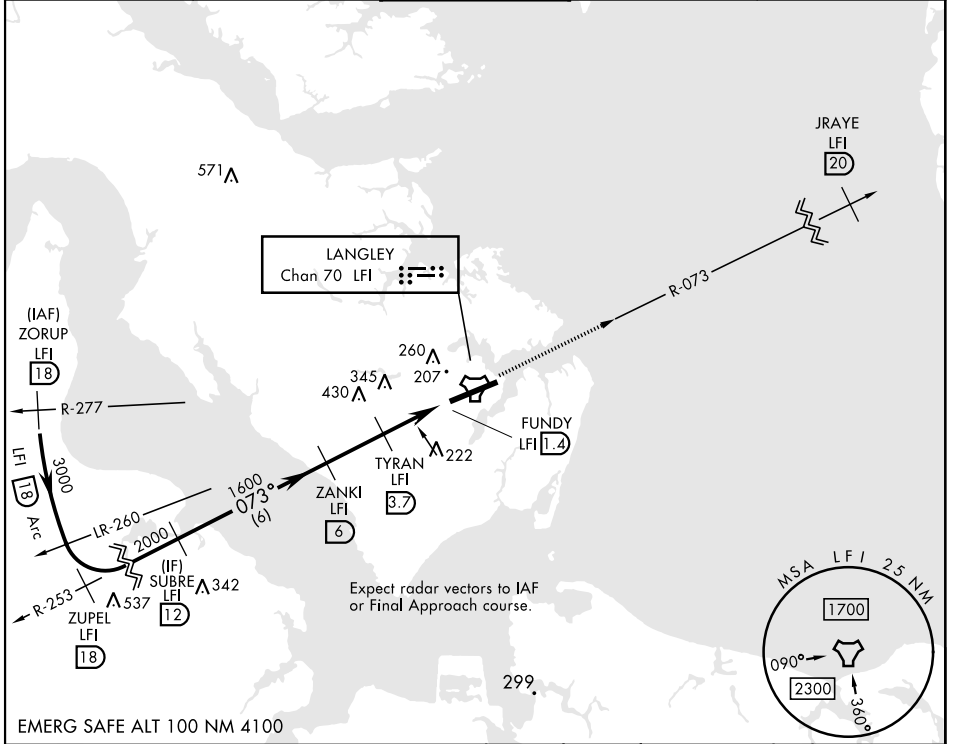
TACAN LFI Chan <b>70</b>	APCH CRS <b>073°</b>	Rwy ldg <b>10,002</b> TDZE <b>8</b> Arprt Elev <b>8</b>
--------------------------	----------------------	---

[USAF]

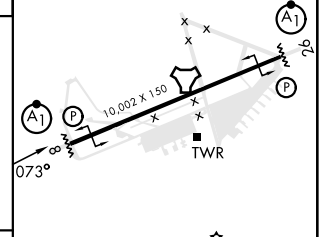
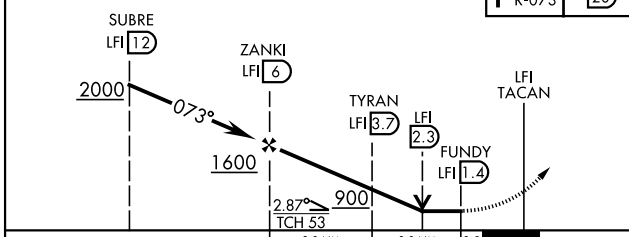
LANGLEY AFB (KLF1)

<p>▼ *When ALS inop, increase CAT AB RVR to 55 and vis to 1 mile, CAT CDE vis to 1 3/8 miles. **Circling not authorized S of Rwy 8-26.</p>	<p>ALSF-1 A1</p>	<p>MISSED APPROACH: Climb to 3000 on LFI TACAN R-073 to JRAYE LFI 20 DME, then as instructed by ATC.</p>
--	----------------------	--

<p>ATIS ★ <b>270.1</b></p>	<p>NORFOLK APP CON <b>125.7 335.625</b></p>	<p>TOWER ★ <b>125.0 253.5</b></p>	<p>GND CON <b>121.7 275.8</b></p>	<p>CLNC DEL <b>118.85 257.625</b></p>
--------------------------------	---	---------------------------------------	---------------------------------------	---



<p>3000 LFI R-073</p>	<p>JRAYE LFI 20</p>	<p>ELEV 8</p>	<p>TDZE 8</p>
-----------------------	---------------------	---------------	---------------



CATEGORY	A	B	C	D	E
S-8*	480/24	472 (500-1/2)	480/50	472	(500-1)
CIRCLING**	520-1 512 (600-1)	560-1 552 (600-1)	700-2 692 (700-2)	740-2 1/4 732 (800-2 1/4)	740-2 1/2 732 (800-2 1/2)

HIRL Rwy 8-26

# TACAN Y RWY 8

NE-3, 15 MAY 2025 to 12 JUN 2025

NE-3, 15 MAY 2025 to 12 JUN 2025