

TACAN Y RWY 26

TACAN LFI Chan 70	APCH CRS 263°	Rwy ldg 10,002 TDZE 8 Arprt Elev 8
--------------------------	----------------------	---

[USAF]

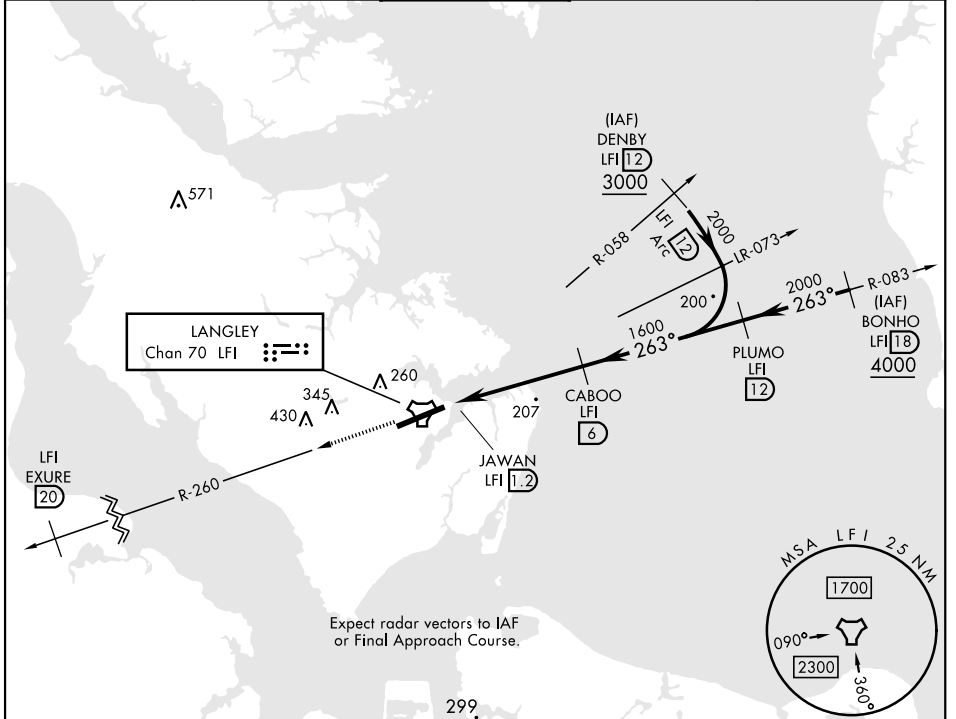
LANGLEY AFB (KLF1)

▼ *When ALS inop, increase CAT AB RVR to 55 and vis to 1 mile, CAT CDE vis to 1 3/8 miles.
 ** Circling not authorized S of Rwy 8-26.



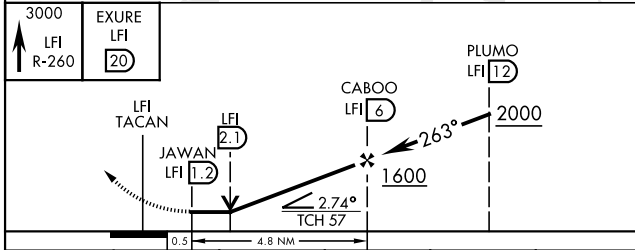
MISSED APPROACH: Climb to 3000 on LFI TACAN R-260 to EXURE LFI 20 DME, then as instructed by ATC.

ATIS ★ 270.1	NORFOLK APP CON 125.7 335.625	TOWER ★ 125.0 253.5	GND CON 121.7 275.8	CLNC DEL 118.85 257.625
---------------------	--------------------------------------	----------------------------	----------------------------	--------------------------------

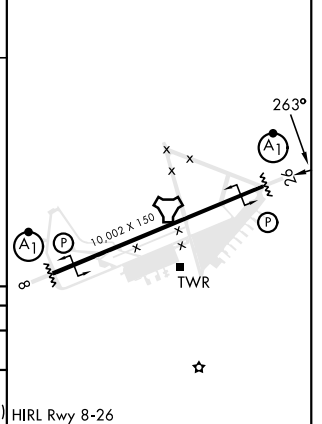


Expect radar vectors to IAF or Final Approach Course.

EMERG SAFE ALT 100 NM 4100



ELEV	8	TDZE	8
------	---	------	---



CATEGORY	A	B	C	D	E
S-26*	480/24	472 (500-1/2)	480/50	472 (500-1)	
CIRCLING**	520-1 512 (600-1)	560-1 552 (600-1)	700-2 692 (700-2)	740-2 1/4 732 (800-2 1/4)	740-2 1/2 732 (800-2 1/2)

HIRL Rwy 8-26

TACAN Y RWY 26

NE-3, 15 MAY 2025 to 12 JUN 2025

NE-3, 15 MAY 2025 to 12 JUN 2025