

HAMPTON, VIRGINIA

# RNAV (GPS) RWY 8

WAAS CH 41170 W08A	APCH CRS 078°	Rwy ldg 10,002	TDZE 8
		Arpt Elev 8	

-(USAF)

LANGLEY AFB (KLFJ)

RNP APCH-GPS

▲ \* When ALS inop, increase RVR to 40, vis to 3/4 mile.  
\*\* When ALS inop, increase vis to 1 3/8 miles.

ALSF-1

MISSED APPROACH: Climb to 600 then climbing to 3000 direct JRAYE, then as instructed by ATC.

ATIS★ 270.1	NORFOLK APP CON/DEP CON 125.7 335.625	TOWER★ 125.0 253.5	GND CON 121.7 275.8	CLNC DEL 118.85 257.625
----------------	--	-----------------------	------------------------	----------------------------

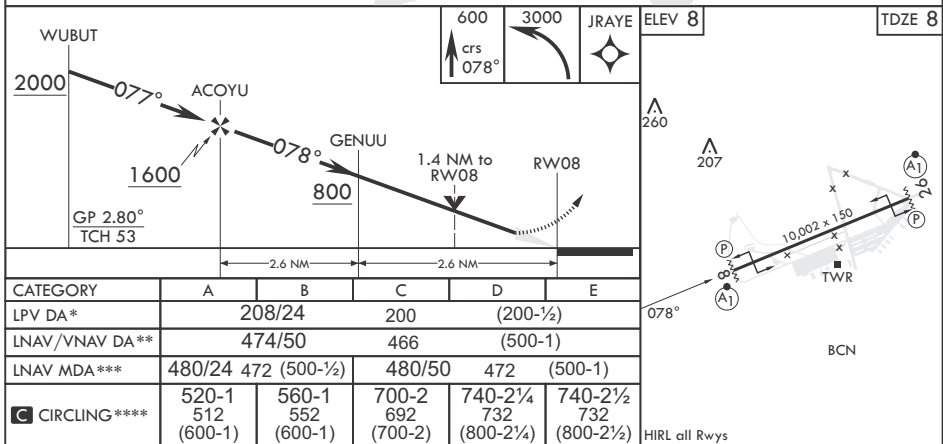
\*\*\* When ALS inop, increase CAT  
AB RVR to 55, vis to 1 mile;  
CAT CDE vis to 1 3/8 miles.  
\*\*\*\* Circling NA S of RWY 8-26

For uncompensated  
Baro-VNAV systems,  
LNAV/VNAV not authorized  
below -6°C or above 54°C.

Average Cold Temperature  
based on Standard  
-30.00°C ISA deviation.



EMERG SAFE ALT 100 NM 4100



HAMPTON, VIRGINIA

37°05'N - 76°22'W

LANGLEY AFB (KLFJ)

Amdt 2 17APR25

# RNAV (GPS) RWY 8

NE-3, 15 MAY 2025 to 12 JUN 2025

NE-3, 15 MAY 2025 to 12 JUN 2025