

ILS or LOC Y RWY 8

LOC I-LFI 109.9	APCH CRS 078°	Rwy Ldg 10,002
		TDZE 8
		Arpt Elev 8

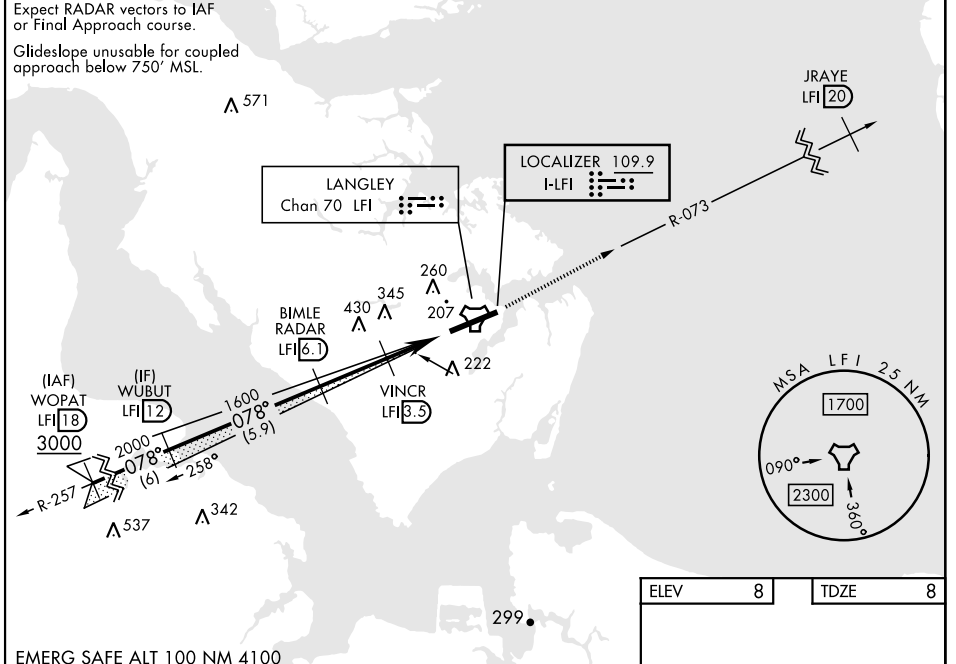
[USAF]

LANGLEY AFB (KLFJ)

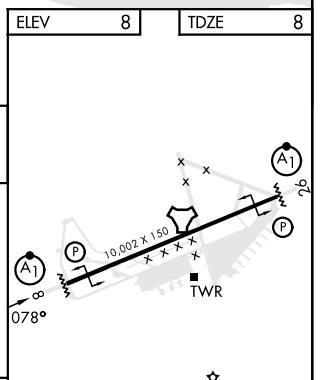
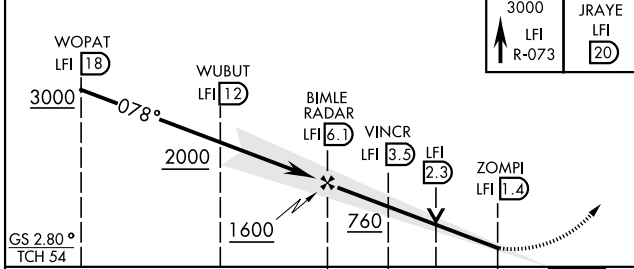
RADAR or DME required		ALSF-1 	MISSED APPROACH: Climb to 3000 on LFI TACAN R-073 to JRAYE LFI 20 DME, then as instructed by ATC.
* When ALS inop, increase RVR to 40 and vis to 3/4 mile. ** When ALS inop, increase CAT AB RVR to 55 and vis to 1 mile, CAT CDE vis to 1 3/8 miles.			

ATIS * 270.1	NORFOLK APP CON 125.7 335.625	TOWER * 125.0 253.5	GND CON 121.7 275.8	CLNC DEL 118.85 257.625
------------------------	---	-------------------------------	-------------------------------	-----------------------------------

*** Circling not authorized S of Rwy 8-26.



EMERG SAFE ALT 100 NM 4100



CATEGORY	A	B	C	D	E
S-ILS 8 *	208/24		200	(200-1/2)	
S-LOC 8 **	480/24	472 (500-1/2)	480/50	472 (500-1)	
CIRCLING ***	520-1 512 (600-1)	560-1 552 (600-1)	700-2 692 (700-2)	740-2 1/4 732 (800-2 1/4)	740-2 1/2 732 (800-2 1/2)

HIRL Rwy 8-26					
FAF to MAP 4.7 NM					
Knots	60	90	120	150	180
Min:Sec	4:42	3:08	2:21	1:53	1:34

ILS or LOC Y RWY 8

NE-3, 15 MAY 2025 to 12 JUN 2025

NE-3, 15 MAY 2025 to 12 JUN 2025