

ILS or LOC Y RWY 26

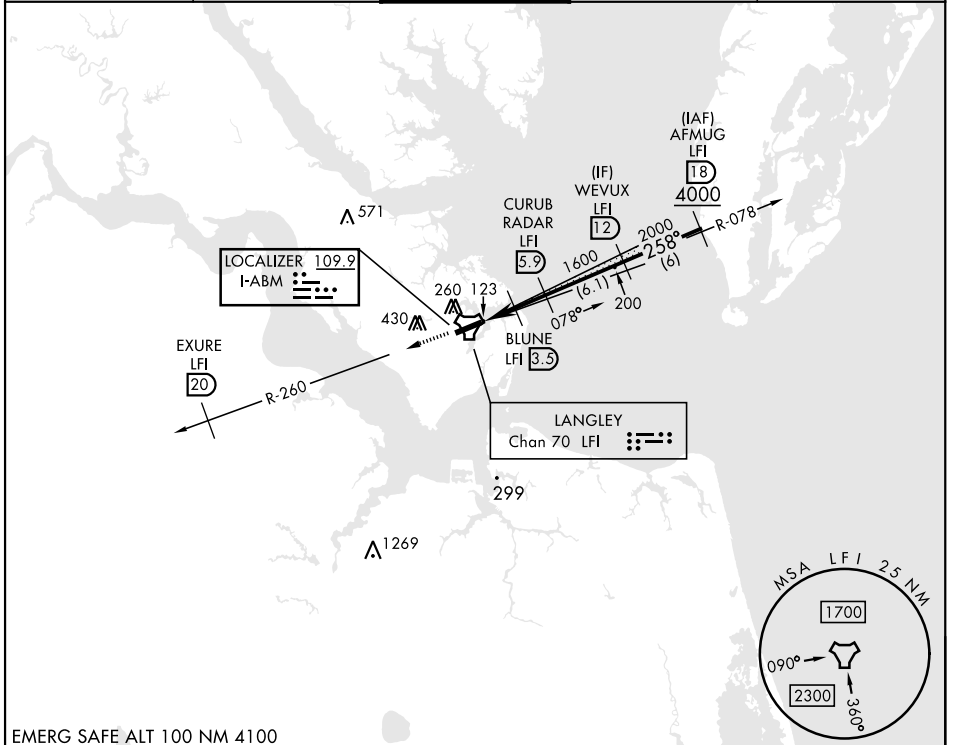
LOC I-ABM 109.9	APCH CRS 258°	Rwy Ldg TDZE 8	10,002
		Arprt Elev 8	

[USAF]

LANGLEY AFB (KLF1)

RADAR or DME required		ALSF-1 	MISSED APPROACH: Climb to 3000 on LFI TACAN R-260 to EXURE LFI 20 DME, then as instructed by ATC.
* When ALS inop, increase RVR to 40 and vis to 3/4 miles. ** When ALS inop, increase RVR to 55 and vis to 1 mile. *** Circling S of Rwy 8-26 not authorized.			

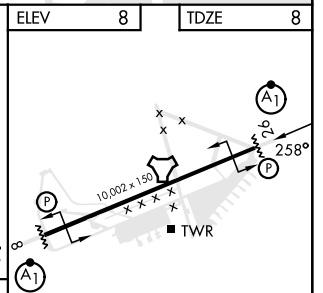
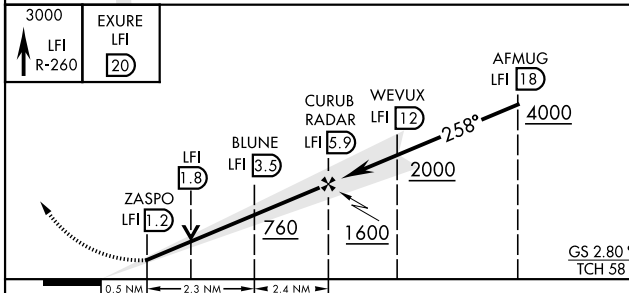
ATIS ★ 270.1	NORFOLK APP CON 125.7 335.625	TOWER ★ 125.0 253.5	GND CON 121.7 275.8	CLNC DEL 118.85 257.625
------------------------	---	-------------------------------	-------------------------------	-----------------------------------



NE-3, 15 MAY 2025 to 12 JUN 2025

NE-3, 15 MAY 2025 to 12 JUN 2025

EMERG SAFE ALT 100 NM 4100



	0.5 NM	2.3 NM	2.4 NM		
CATEGORY	A	B	C	D	E
S-ILS 26*	208/24		200	(200-1/2)	
S-LOC 26**	380/24	372 (400-1/2)	380/35	372	(400-5/8)
CIRCLING ***	520-1	560-1	700-2	740-2 1/4	740-2 1/2
	512 (600-1)	552 (600-1)	692 (700-2)	732 (800-2 1/4)	732 (800-2 1/2)

ELEV	8	TDZE	8
HIRL Rwy 8-26			
FAF to MAP 4.7 NM			
Knots	60	90	120 150 180
Min:Sec	4:42	3:08	2:21 1:53 1:34

ILS or LOC Y RWY 26