

HAMPTON, VIRGINIA

HI-TACAN Z RWY 8

TACAN Chan 70	LFI	APCH CRS 073°	Rwy Ldg TDZE Arprt Elev	10,002 8 8
-------------------------	-----	-------------------------	-------------------------------	---------------------------------------

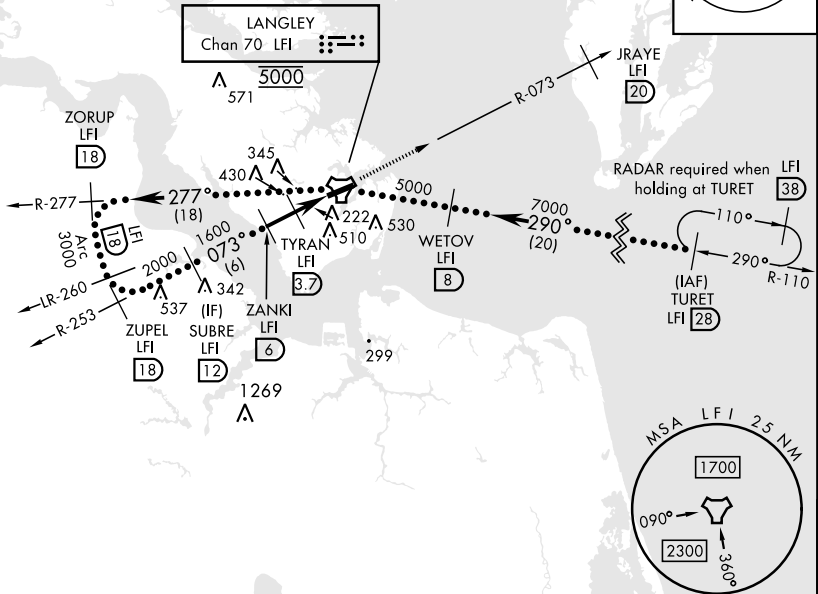
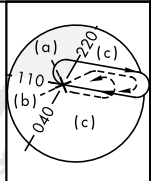
[USAF]

LANGLEY AFB (KLFJ)

<p>▼ * When ALS inop, increase CAT CDE vis to 1 3/8 miles. ** Circling S of Rwy 8-26 not authorized.</p>	<p>ALSF-1 </p>	<p>MISSED APPROACH: Climb to 3000 via LFI TACAN R-073 to JRAYE/20 DME, then as instructed by ATC.</p>
--	--------------------	---

<p>ATIS ★ 270.1</p>	<p>NORFOLK APP CON 125.7 335.625</p>	<p>TOWER ★ 125.0 253.5</p>	<p>GND CON 121.7 275.8</p>	<p>CLNC DEL 118.85 257.625</p>
--------------------------------	---	---------------------------------------	---------------------------------------	---

Expect radar vectors to IAF or Final Approach course.



NE-3, 15 MAY 2025 to 12 JUN 2025

NE-3, 15 MAY 2025 to 12 JUN 2025

EMERG SAFE ALT 100 NM 4100

	ELEV	8	TDZE	8
		3000 LFI R-073	JRAYE LFI 20	
CATEGORY	C	D	E	
S-8 *	480/50 472 (500-1)			
CIRCLING **	700-2 692 (700-2)	740-2 1/4 732 (800-2 1/4)	740-2 1/2 732 (800-2 1/2)	HIRL Rwy 8-26

HAMPTON, VIRGINIA

37°05'N-76°22'W

LANGLEY AFB (KLFJ)

Amdt 7 17APR25

HI-TACAN Z RWY 8