


HI-TACAN Z RWY 26

TACAN LFI Chan 70	APCH CRS 263°	Rwy ldg 10,002 TDZE 8 Arprt Elev 8
--------------------------	----------------------	---

[USAF]

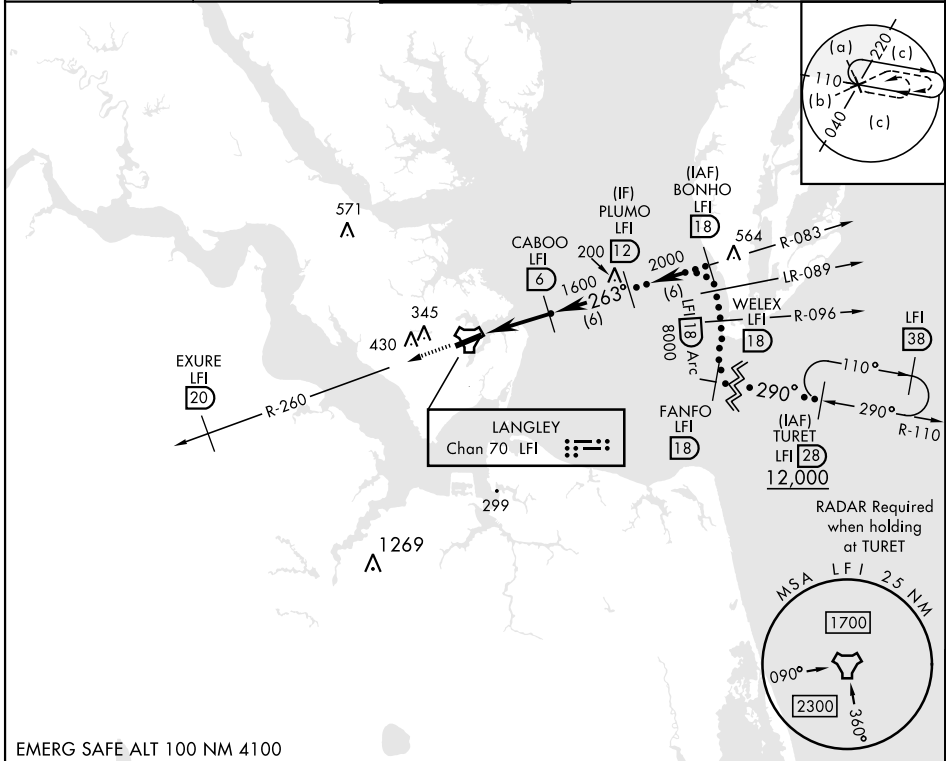
LANGLEY AFB (KLFJ)

* When ALS inop, increase CAT CDE vis to 1½ miles.
 ** Circling S of Rwy 8-26 not authorized.

 ALSF-1


 MISSED APPROACH: Climb to 3000 using LFI TACAN R-260 to EXURE LFI 20 DME, then as instructed by ATC.

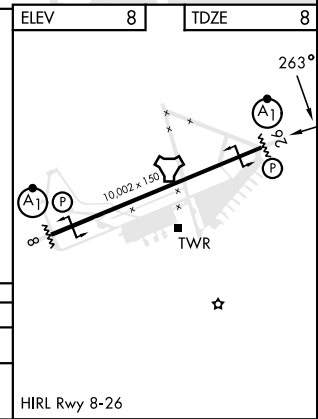
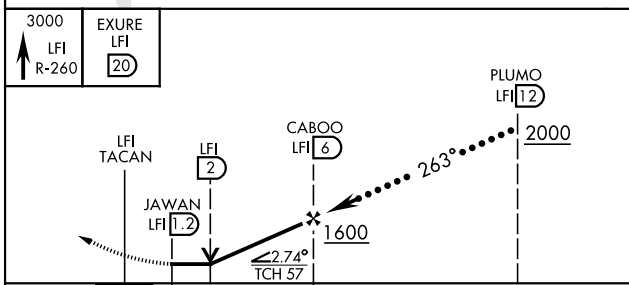
ATIS * 270.1	NORFOLK APP CON 125.7 335.625	TOWER * 125.0 253.5	GND CON 121.7 275.8	CLNC DEL 118.85 257.625
------------------------	---	-------------------------------	-------------------------------	-----------------------------------



NE-3, 15 MAY 2025 to 12 JUN 2025

NE-3, 15 MAY 2025 to 12 JUN 2025

EMERG SAFE ALT 100 NM 4100



ELEV	8	TDZE	8
CATEGORY	C	D	E
S-26 *	480/50	472	(500-1)
CIRCLING **	700-2 692 (700-2)	740-2 ¼ 732 (800-2 ¼)	740-2 ½ 732 (800-2 ½)

HIRL Rwy 8-26

HI-TACAN Z RWY 26