

HI-ILS or LOC Z RWY 8

LOC I-LFI 109.9	APCH CRS 078°	Rwy Ildg 10,002	TDZE 8	Arprt Elev 8
---------------------------	-------------------------	--------------------	-----------	-----------------

[USAF]

LANGLEY AFB (KLFJ)

RADAR or DME required.

- ▼ * When ALS inop, increase RVR to 40 and vis to 3/8 mile.
- ** When ALS inop, increase vis to 1/8 miles.
- *** Circling S of Rwy 8-26 not authorized.

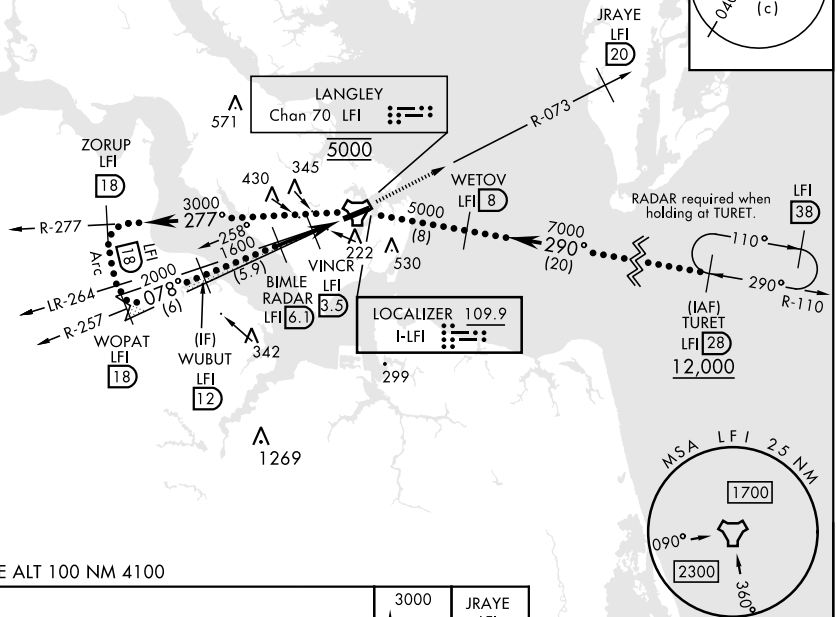
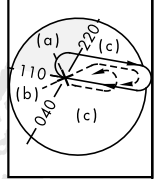


MISSED APPROACH: Climb to 3000 on LFI TACAN R-073 to JRAYE/20 DME, then as instructed by ATC.

ATIS ★ 270.1	NORFOLK APP CON 125.7 335.625	TOWER ★ 125.0 253.5	GND CON 121.7 275.8	CLNC DEL 118.85 257.625
------------------------	---	-------------------------------	-------------------------------	-----------------------------------

Glideslope unusable for coupled approach below 750' MSL.

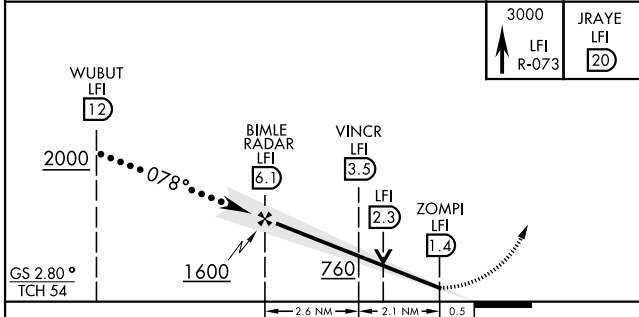
Expect RADAR vectors to IAF or Final Approach course.



NE-3, 15 MAY 2025 to 12 JUN 2025

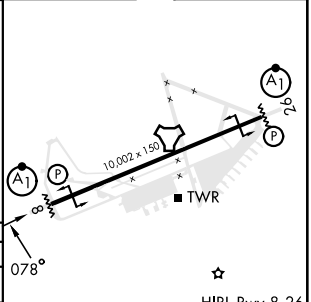
NE-3, 15 MAY 2025 to 12 JUN 2025

EMERG SAFE ALT 100 NM 4100



ELEV	8	TDZE	8
------	---	------	---

CATEGORY	C	D	E
S-ILS 8*	208/24	200	(200-1/2)
S-LOC 8**	480/50	472	(500-1)
CIRCLING ***	700-2 692 (700-2)	740-2 1/4 732 (800-2 1/4)	740-2 1/2 732 (800-2 1/2)



HAMPTON, VIRGINIA 37° 05' N-76° 22' W LANGLEY AFB (KLFJ)

Amdt 8 17APR25

HI-ILS or LOC Z RWY 8

FAF to MAP 4.7 NM					
Knots	120	140	160	180	200
Min:Sec	2:21	2:01	1:46	1:34	1:25