

HI-ILS or LOC Z RWY 26

LOC I-ABM 109.9	APCH CRS 258°	Rwy Idg 10,002
		TDZE 8
		Arprt Elev 8

[USAF]

LANGLEY AFB (KLFJ)

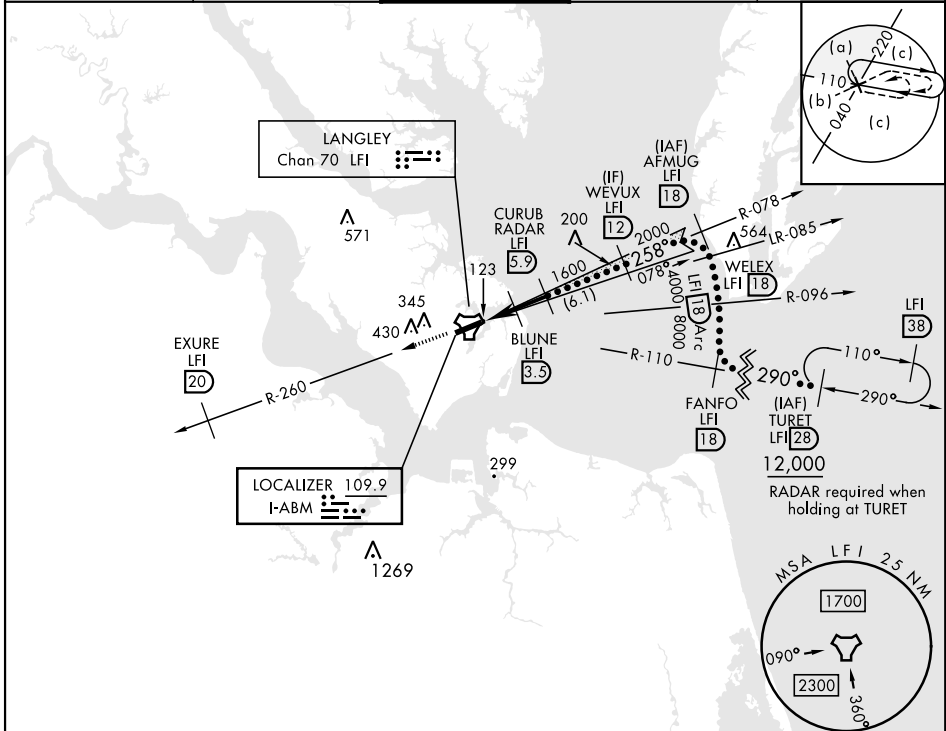
RADAR or DME required.

- *When ALS inop, increase RVR to 40, vis to 3/4 mile.
- **When ALS inop, increase RVR to 55, vis to 1 miles.
- ***Circling S of Rwy 8-26 not authorized.

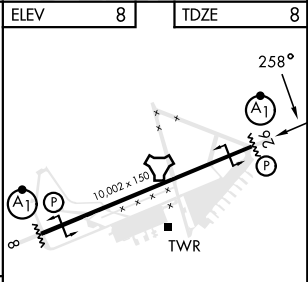
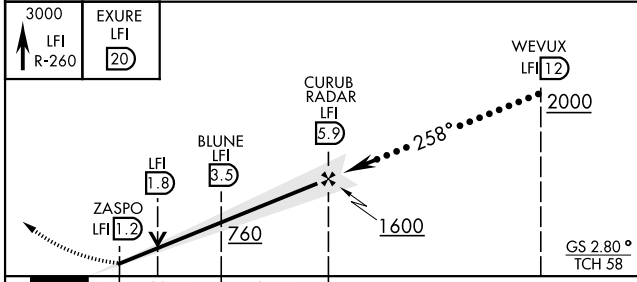


MISSED APPROACH: Climb to 3000 on LFI TACAN R-260 to EXURE/20 DME, then as instructed by ATC.

ATIS ★ 270.1	NORFOLK APP CON 125.7 335.625	TOWER ★ 125.0 253.5	GND CON 121.7 275.8	CLNC DEL 118.85 257.625
------------------------	---	-------------------------------	-------------------------------	-----------------------------------



EMERG SAFE ALT 100 NM 4100



CATEGORY	C	D	E
S-ILS 26*	208/24	200	(200-1/2)
S-LOC 26**	380/35	372	(400-5/8)
CIRCLING ***	700-2 692 (700-2)	740-2 1/4 732 (800-2 1/4)	740-2 1/2 732 (800-2 1/2)

FAF to MAP 4.7 NM					
Knots	120	140	160	180	200
Min:Sec	2:21	2:01	1:46	1:34	1:25

HI-ILS or LOC Z RWY 26

NE-3, 15 MAY 2025 to 12 JUN 2025

NE-3, 15 MAY 2025 to 12 JUN 2025