


LOC/DME I-BQE 108.7 Chan 24	APP CRS 252°	Rwy Idg 10599 TDZE 678 Apt Elev 684
---	------------------------	--

ILS Z or LOC Z RWY 25

EUGENE F KRANZ TOLEDO EXPRESS (TOL)

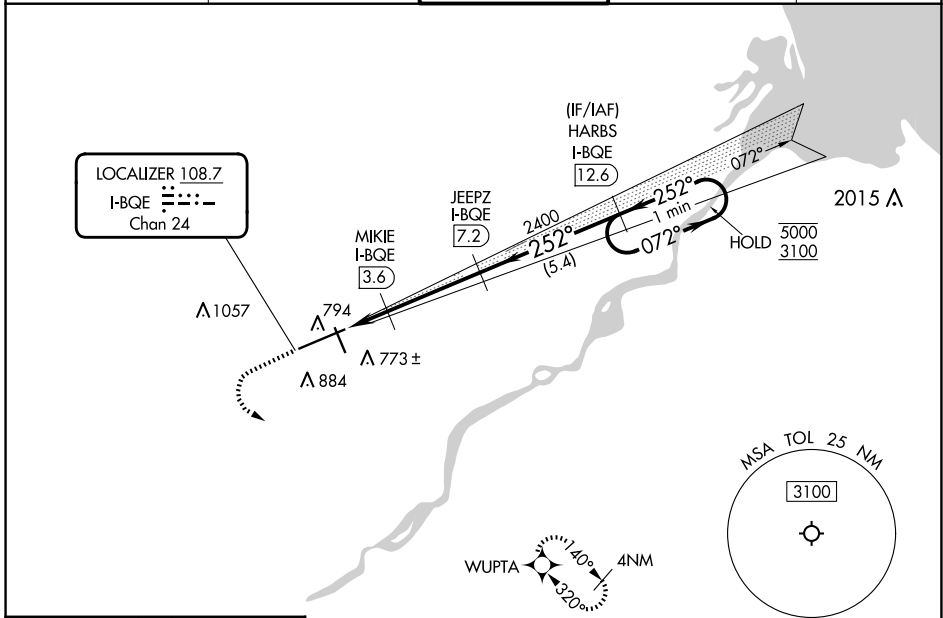
RADAR required for procedure entry. DME, RNAV 1-GPS required.

▼ For inop ALS, increase S-ILS 25 Cat E visibility to RVR 4000, and S-LOC 25 Cat E visibility to RVR 5000.
▲ ASR * RVR 1800 authorized with use of FD or AP or HUD to DA.

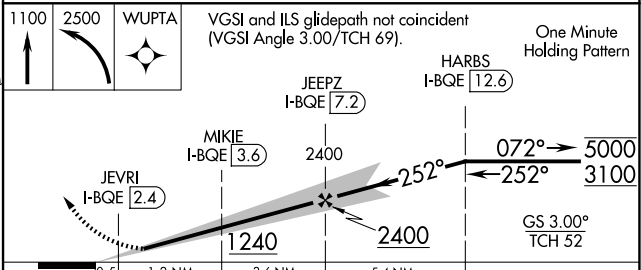
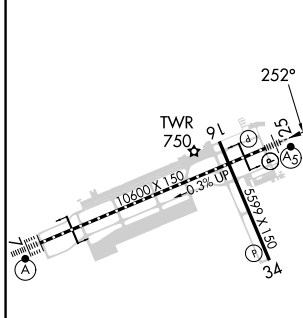
MALSR 

MISSED APPROACH: Climb to 1100 then climbing left turn to 2500 direct WUPTA and hold.

ATIS 118.75 290.225	TOLEDO APP CON 134.35 317.55	TOLEDO TOWER 118.1 285.4	GND CON 121.9 348.6	CLNC DEL 121.75 348.6
-------------------------------	--	------------------------------------	-------------------------------	---------------------------------



ELEV 684	D	TDZE 678
----------	----------	----------



CATEGORY	A	B	C	D	E
S-ILS 25*	878/24 200 (200-½)				
S-LOC 25	1000/24	322 (400-½)	1000/26	322 (400-½)	
C CIRCLING	1200-1	516 (600-1)	1300-1¾ 616 (700-1¾)	1360-2¼ 676 (700-2¼)	1360-2½ 676 (700-2½)

EC-2, 15 MAY 2025 to 12 JUN 2025

EC-2, 15 MAY 2025 to 12 JUN 2025