

# HI-TACAN RWY 25

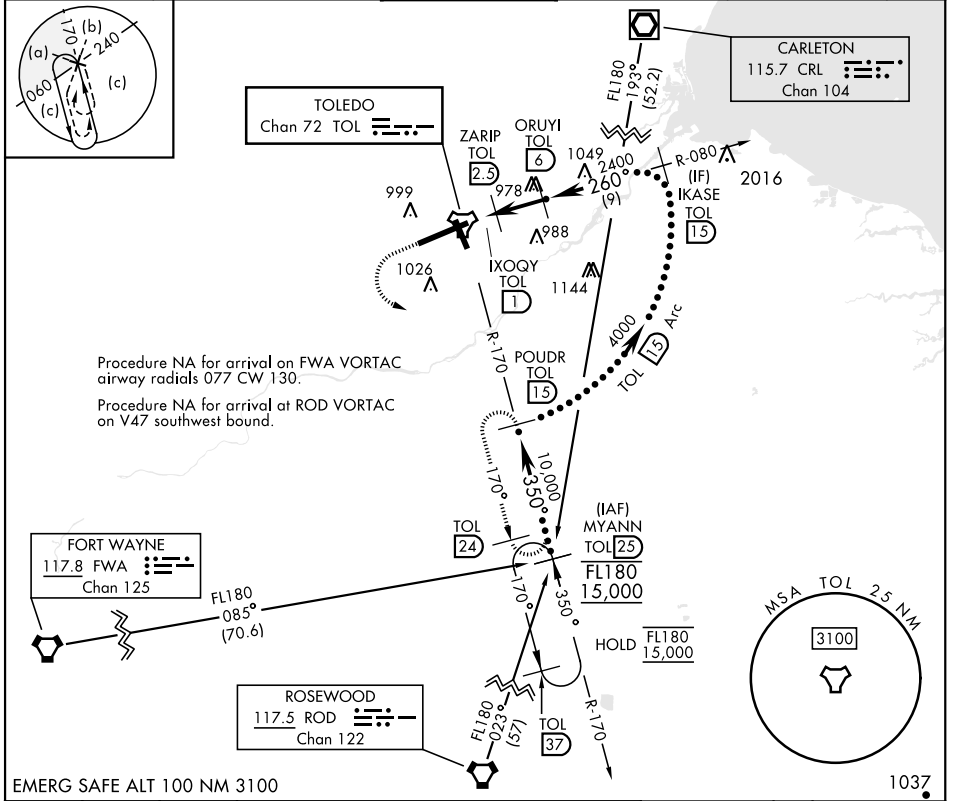
TACAN TOL Chan <b>72</b>	APCH CRS <b>260°</b>	Rwy ldg <b>10,599</b> TDZE <b>678</b> Arpt Elev <b>684</b>
-----------------------------	-------------------------	--

[USAF]

EUGENE F KRANZ TOLEDO EXPRESS (KTOL)

<p><b>▽</b> * When ALS inop, increase RVR to 60, vis to 1½ mile.</p> <p><b>▲</b></p>	<p>MALSR <b>A5</b></p>	<p>MISSED APPROACH: Climb to 3000 then left turn on TOL R-170 to POWDR/15 DME and hold.</p>
--	------------------------	---

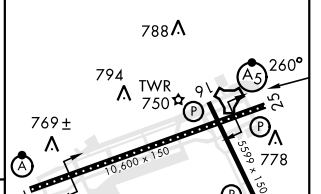
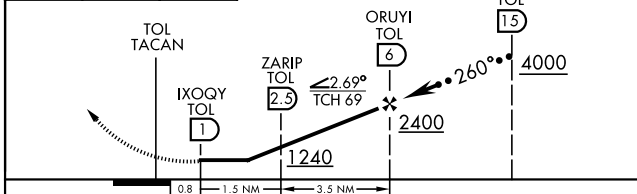
<p>ATIS <b>118.75 290.225</b></p>	<p>TOLEDO APP CON <b>126.1 317.55</b></p>	<p>TOLEDO TOWER <b>118.1 285.4</b></p>	<p>GND CON <b>121.9 348.6</b></p>	<p>CLNC DEL <b>121.75 348.6</b></p>	<p>ASR</p>
---------------------------------------	---	--	---------------------------------------	---	------------



EMERG SAFE ALT 100 NM 3100

<p>3000</p> <p>TOL R-170</p> <p>POWDR TOL 15</p>	<p>VGSI and ILS glidepath not coincident (VGSI Angle 3.00/TCH 69).</p>
--	--

ELEV 684	TDZE 678
Rwy 7 ldg 10,599'	
Rwy 25 ldg 10,599'	



CATEGORY	C	D	E
S-25 *	1080/40 402 (500-¾)	1080/40	402 (500-¾)
CIRCLING	1360-2 676 (700-2)	1400-2¼ 716 (800-2¼)	1400-2½ 716 (800-2½)

HIRL Rwy 7-25	726 ± A
MIRL Rwy 16-34	
REIL Rwy 16, 34	
TDZL/CL Rwy 7	775 ± A

# HI-TACAN RWY 25

EC-2, 15 MAY 2025 TO 12 JUN 2025

EC-2, 15 MAY 2025 TO 12 JUN 2025