

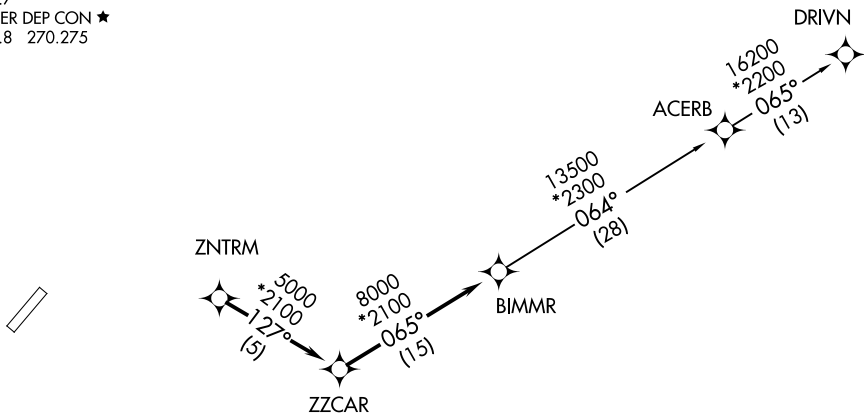
BIMMR THREE DEPARTURE (RNAV)

DONALDSON FLD (GYH)
GREENVILLE, SOUTH CAROLINA

AWOS-3
127.325
CLNC DEL
121.4
GND CON
121.4
DONALDSON TOWER ★
133.325 269.25
UNICOM
122.7
GREER DEP CON ★
118.8 270.275

RNAV 1 - DME/DME/IRU or GPS.
RADAR required.

TOP ALTITUDE:
3000



TAKEOFF MINIMUMS

Rwy 23: Standard.

Rwy 5: 300-1¾ or standard with minimum climb of 223' per NM to 1300, or alternatively, with standard takeoff minimums and a normal 200' per NM climb gradient, takeoff must occur no later than 1900' prior to DER.

NOTE: Do not exceed 250K until advised by ATC.

NOTE: For turbojets only.

NOTE: Chart not to scale.



DEPARTURE ROUTE DESCRIPTION

TAKEOFF RUNWAYS 5, 23: Climb on assigned heading for RADAR vectors to ZNTRM, thence. . . .

. . . .on depicted route to BIMMR. Then on assigned transition. Maintain 3000. Expect clearance to filed altitude within 10 minutes after departure.

ACERB TRANSITION (BIMMR3.ACERB)

DRIVN TRANSITION (BIMMR3.DRIVN)

BIMMR THREE DEPARTURE (RNAV)