

| | | |
|--|------------------------|--|
| LOC/DME I-LZY 111.9 Chan 56 | APP CRS 054° | Rwy Idg 10001 TDZE 900 Apt Elev 926 |
|--|------------------------|--|

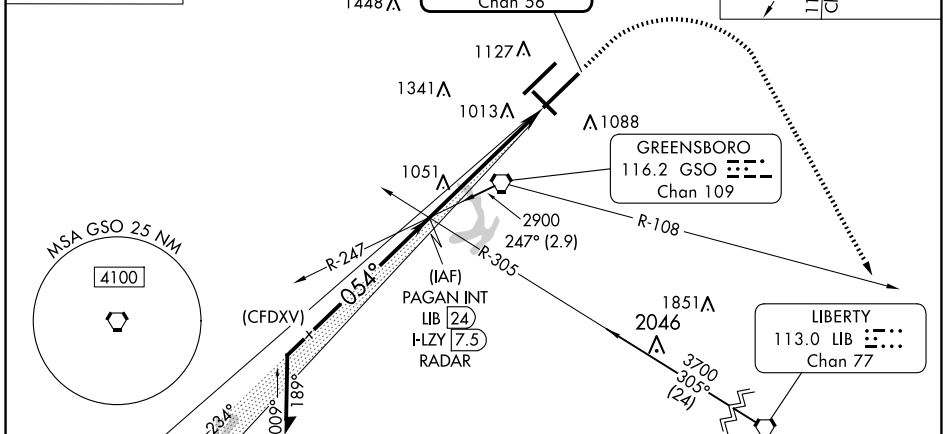
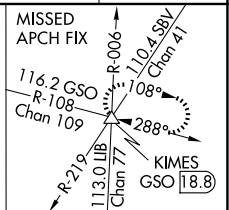
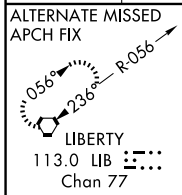
ILS RWY 5R (SA CAT II)

PIEDMONT TRIAD INTL (GSO)

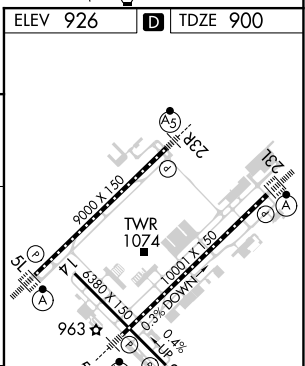
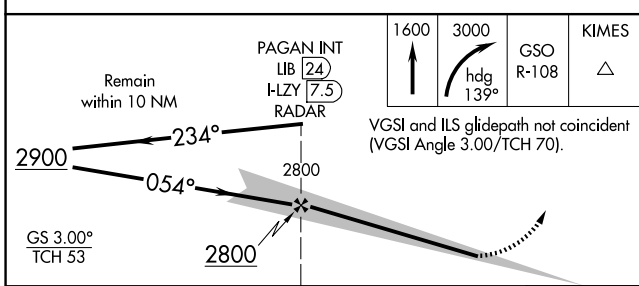
Simultaneous approach authorized.
 REDUCED LIGHTING: Requires specific OPSPEC, MSPEC, or LOA approval and use of autoland or HUD to touchdown.

MALS/R MISSED APPROACH: Climb to 1600 then climbing right turn to 3000 on heading 139° and GSO VORTAC R-108 to KIMES INT/ GSO 18.8 DME and hold.

| | | | | |
|-------------------------|---|--|-------------------------------|---------------------------|
| D-ATIS 128.55 | GREENSBORO APP CON 124.35 269.225 (250°-049°) 126.6 327.075 (050°-249°) | GREENSBORO TOWER 119.1 290.325 | GND CON 121.9 348.6 | CLNC DEL 121.75 |
|-------------------------|---|--|-------------------------------|---------------------------|



| | |
|----------|-------------------|
| ELEV 926 | D TDZE 900 |
|----------|-------------------|



| | | | | |
|----------|-----------------------|---|---|---|
| CATEGORY | A | B | C | D |
| S-ILS 5R | RA 122/12 100 DA 1000 | | | |

SA CATEGORY II ILS - SPECIAL AIRCREW & AIRCRAFT CERTIFICATION REQUIRED

TDZ/CL Rwy 5L, 23R and 23L
 REIL Rwy 32
 HIRL Rwy 14-32, 5R-23L and 5L-23R

SE-2, 15 MAY 2025 to 12 JUN 2025

SE-2, 15 MAY 2025 to 12 JUN 2025