

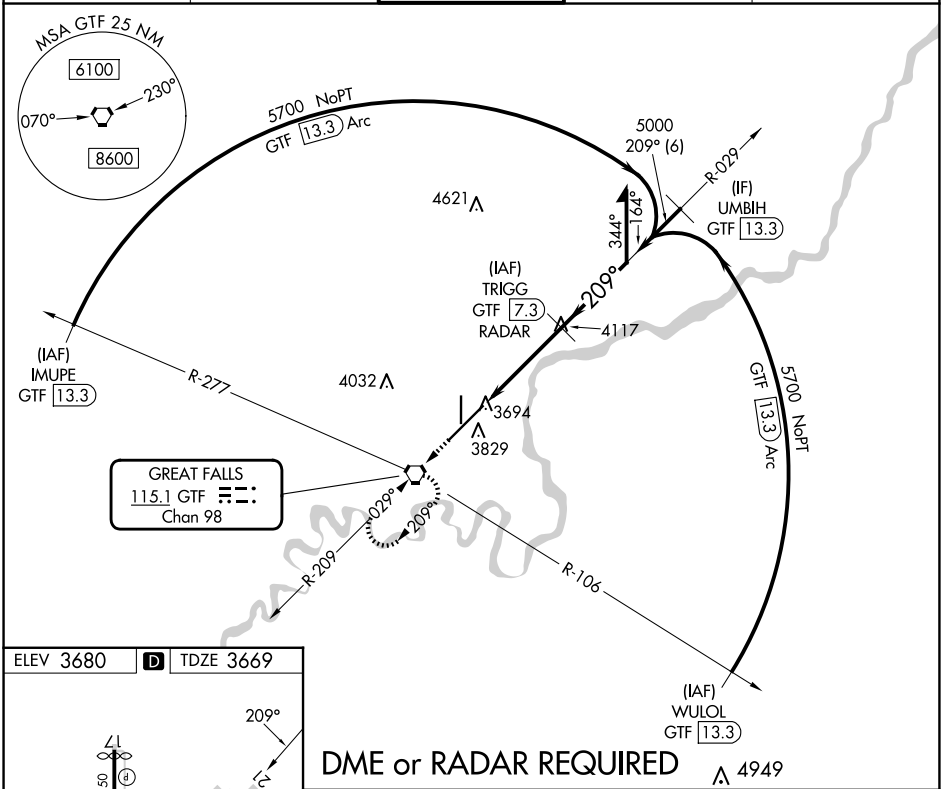
VORTAC GTF <b>115.1</b> Chan <b>98</b>	APP CRS <b>209°</b>	Rwy Idg <b>10502</b> TDZE <b>3669</b> Apt Elev <b>3680</b>
--	------------------------	--

# VOR RWY 21

GREAT FALLS INTL (GTF)

DME or RADAR required.		MISSED APPROACH: Climb to 8000 direct GTF VORTAC and hold, continue climb-in-hold to 8000.		
------------------------	--	--	--	--

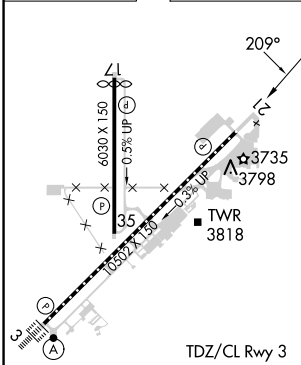
ATIS <b>126.6 269.0</b>	GREAT FALLS APP CON <b>128.6 379.175</b>	GREAT FALLS TOWER <b>118.7 282.2</b>	GND CON <b>121.7 348.6</b>	CLNC DEL <b>121.7 348.6</b>
----------------------------	---	---	-------------------------------	--------------------------------



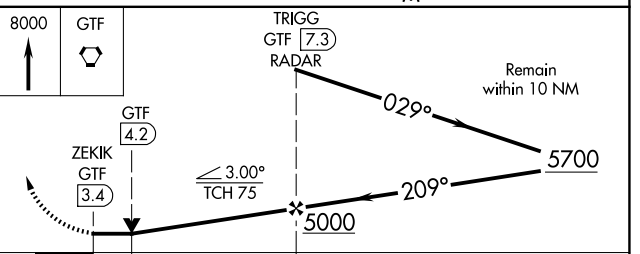
NW-1, 15 MAY 2025 to 12 JUN 2025

NW-1, 15 MAY 2025 to 12 JUN 2025

ELEV 3680	<b>D</b>	TDZE 3669
-----------	----------	-----------



## DME or RADAR REQUIRED



FAF to MAP 4 NM					
Knots	60	90	120	150	180
Min:Sec	4:00	2:40	2:00	1:36	1:20
CIRCLING	4140-1	460 (500-1)	4340-1¾ 660 (700-1¾)	4420-2¼ 740 (800-2¼)	