

VOR/DME GRI <b>116.55</b> Chan <b>112(Y)</b>	APP CRS <b>313°</b>	Rwy Idg TDZE Apt Elev <b>6608</b> <b>1844</b> <b>1847</b>
--	------------------------	--

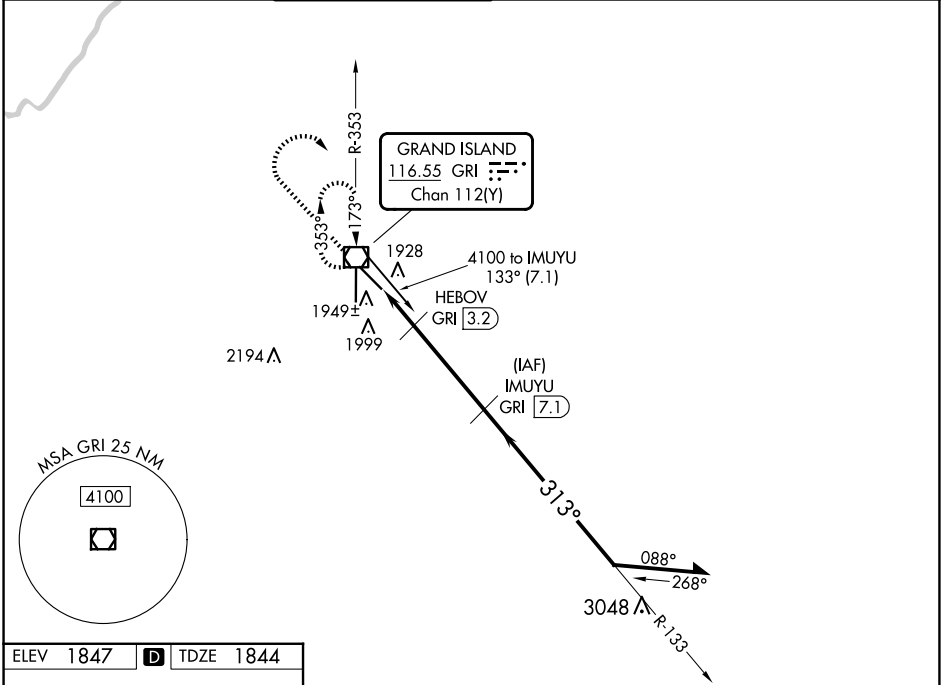
# VOR/DME RWY 31

CENTRAL NEBRASKA RGNL (GRI)

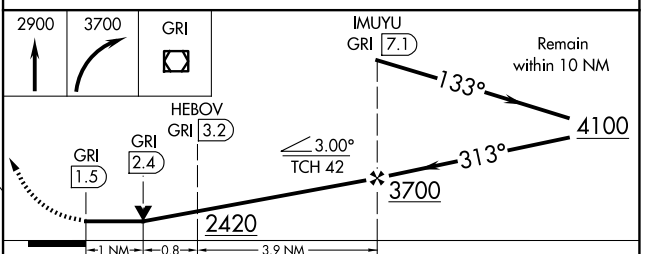
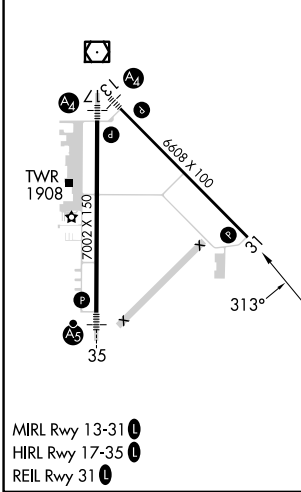
**⚠** When local altimeter setting not received, use Aurora altimeter setting and increase all MDA 60 feet, increase Circling Cats C/D visibility ¼ SM. VDP NA when using Aurora altimeter setting.

**MISSED APPROACH:** Climb to 2900 then climbing right turn to 3700 direct GRI VOR/DME and hold.

ATIS <b>127.4</b>	MINNEAPOLIS CENTER <b>119.4 278.8</b>	GRAND ISLAND TOWER * <b>118.2 (CTAF) 0 259.3</b>	GND CON <b>121.9 259.3</b>	CLNC DEL <b>121.9</b>	CLNC DEL <b>126.05</b> (when twr closed)	UNICOM <b>122.95</b>
----------------------	--	---	-------------------------------	--------------------------	--	-------------------------



ELEV <b>1847</b>	<b>D</b>	TDZE <b>1844</b>
------------------	----------	------------------



CATEGORY	A	B	C	D
S-31	2200-1	356 (400-1)	2200-1¼	2200-1¼ 356 (400-1¼)
CIRCLING	2300-1	453 (500-1)	2400-1½ 553 (600-1½)	2560-2¼ 713 (800-2¼)

NC-2, 15 MAY 2025 to 12 JUN 2025

NC-2, 15 MAY 2025 to 12 JUN 2025