

GOLDSBORO, NORTH CAROLINA

# RNAV (GPS) RWY 8

WAAS CH <b>63600</b> W08A	APCH CRS <b>081°</b>	Rwy ldg TDZE <b>73</b> Arprt Elev <b>109</b>
---------------------------------	-------------------------	--

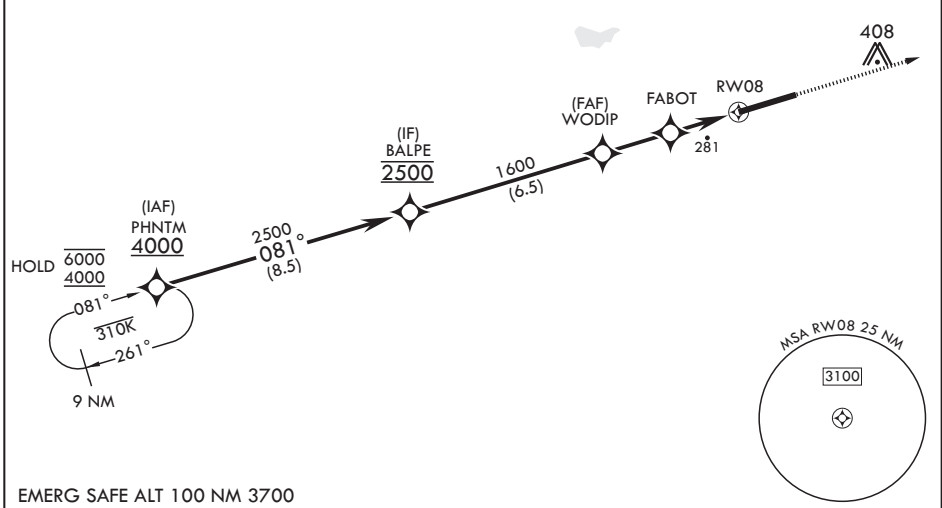
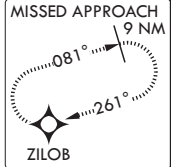
- (USAF)

SEYMOUR JOHNSON AFB (KGSB)

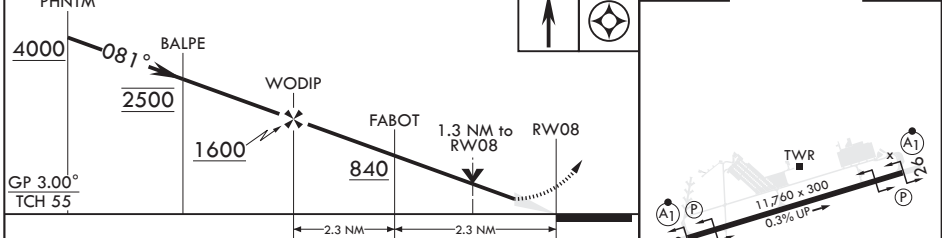
RNP APCH-GPS	ALSF-1	MISSED APPROACH: Climb to 2300 direct ZILOB and hold.
--------------	--------	---

ATIS★ <b>317.625</b>	APP CON <b>119.7 273.6</b> (111° -257°) <b>123.7 290.9</b> (258° -110°)	TOWER★ <b>126.25 370.875</b>	GND CON <b>132.45 275.8</b>	CLNC DEL <b>128.025 270.8</b>
-------------------------	---	---------------------------------	--------------------------------	----------------------------------

319  
 \*\*\* When ALS inop, increase CAT  
 AB RVR to 55, vis to 1 mile;  
 CAT CDE vis to 1 3/8 miles.  
 \*\*\*\* Circling NA N of RWY 8-26.  
 For uncompensated  
 Baro-VNAV systems,  
 procedure NA below -15°C  
 (5°F) or above 54°C (130°F).



EMERG SAFE ALT 100 NM 3700



CATEGORY	A	B	C	D	E
LPV DA*	273/24		200	(200-½)	
LNAV/VNAV DA**	540/50		467	(500-1)	
LNAV MDA***	540/24	467 (500-½)	540/50	467	(500-1)
☐ CIRCLING****	580-1 471 (500-1)	600-1 491 (500-1)	680-1½ 571 (600-½)	740-2 631 (700-2)	740-2¼ 631 (700-2¼)

HIRL all Rwys

GOLDSBORO, NORTH CAROLINA

35°20'N - 77°58'W

SEYMOUR JOHNSON AFB (KGSB)

Amdt 7 11JUL24

# RNAV (GPS) RWY 8

SE-2, 15 MAY 2025 to 12 JUN 2025

SE-2, 15 MAY 2025 to 12 JUN 2025