

GOLDSBORO, NORTH CAROLINA

HI-TACAN Z RWY 8

SEYMOUR JOHNSON AFB (KGSB)

TACAN GSB Chan 112	APCH CRS 081°	Rwy ldg 11,760 TDZE 73 Arprt Elev 109
------------------------------	-------------------------	--

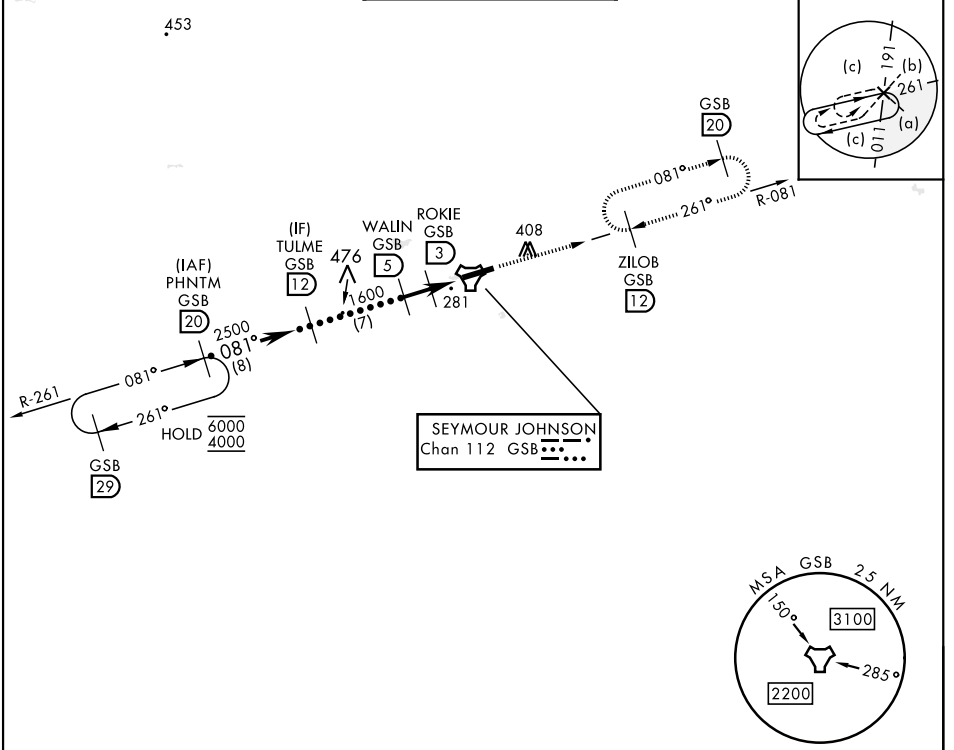
[USAF]

MISSED APPROACH: Climb to 2300 via GSB TACAN R-081 to ZILOB and hold.

▼ * When ALS inop, increase vis to 1 3/8 miles.
 ** Circling N of Rwy 8-26 not authorized.



ATIS ★ 317.625	APP CON 123.7 290.9 (258°- 110°) 119.7 273.6 (111°- 257°)	TOWER ★ 126.25 370.875	GND CON 132.45 275.8	CLNC DEL 128.025 270.8
--------------------------	---	----------------------------------	--------------------------------	----------------------------------



SE-2, 15 MAY 2025 to 12 JUN 2025

SE-2, 15 MAY 2025 to 12 JUN 2025

EMERG SAFE ALT 100 NM 3700

† WALIN to ZESIX			2300 GSB R-081	ZILOB GSB 12	ELEV 109	TDZE 73
CATEGORY	C	D	E			
S-8 *	540/50	467 (500-1)				
CIRCLING **	680-1 1/2 571 (600-1 1/2)	740-2 631 (700-2)	740-2 1/4 631 (700-2 1/4)	HIRL Rwy 8-26		

GOLDSBORO, NORTH CAROLINA

35° 20' N-77° 58' W

SEYMOUR JOHNSON AFB (KGSB)

Amdt 8 03NOV22

HI-TACAN Z RWY 8

