

# HI-ILS or LOC Z RWY 26

LOC I-DDX <b>109.9</b>	APCH CRS <b>261°</b>	Rwy ldg <b>11,760</b> TDZE <b>109</b> Arprt Elev <b>109</b>
---------------------------	-------------------------	---

[USAF]

SEYMOUR JOHNSON AFB (KGSB)

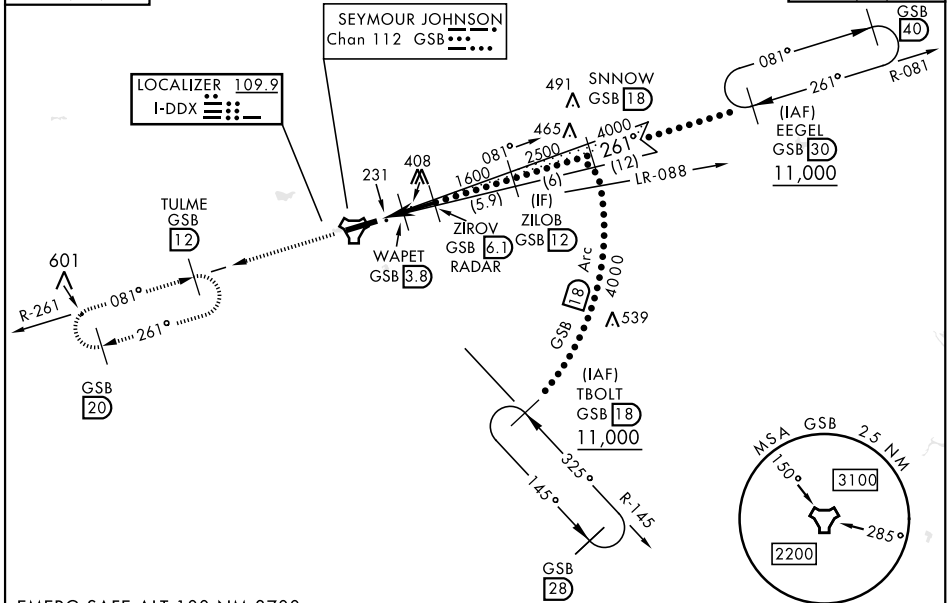
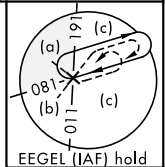
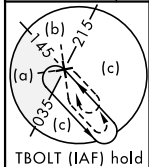
RADAR or DME required.

ALSIF-1

MISSED APPROACH: Climb to 2200 via GSB  
TACAN R-261 to TULME and hold.

▼ \* When ALS inop, increase RVR to 40 and vis to 3/4 mile.  
\*\* When ALS inop, increase RVR to 60 and vis to 1 1/8 miles.

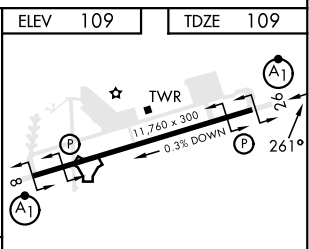
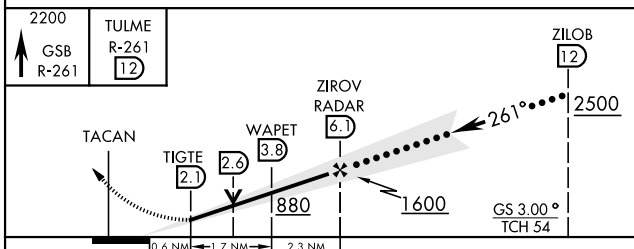
ATIS ★ <b>317.625</b>	APP CON <b>123.7 290.9</b> (258°-110°) <b>119.7 273.6</b> (111°-257°)	TOWER ★ <b>126.25 370.875</b>	GND CON <b>132.45 275.8</b>	CLNC DEL <b>128.025 270.8</b>
--------------------------	---	----------------------------------	--------------------------------	----------------------------------



SE-2, 15 MAY 2015 to 12 JUN 2025

SE-2, 15 MAY 2015 to 12 JUN 2025

EMERG SAFE ALT 100 NM 3700



CATEGORY	C	D	E
S-ILS 26 *	309/24	200 (200-1/2)	
S-LOC 26 **	500/35	391 (400-5/8)	
*** CIRCLING	680-1 1/2 571 (600-1 1/2)	740-2 631 (700-2)	740-2 1/4 631 (700-2 1/4)

HIRL Rwy 8-26

FAF to MAP 4 NM					
Knots	120	140	160	180	200
Min:Sec	2:00	1:43	1:30	1:20	1:12

# HI-ILS or LOC Z RWY 26