

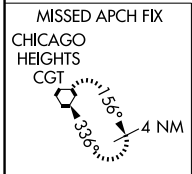
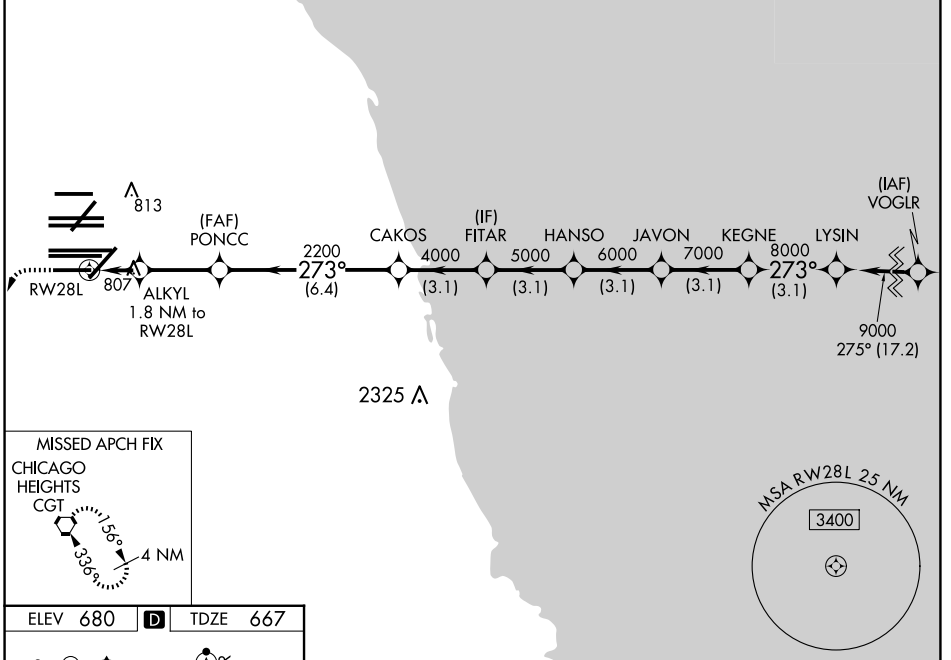
WAAS CH 65837 W28D	APP CRS 273°	Rwy Idg TDZE Apt Elev	7500 667 680
--	------------------------	-----------------------------	---

RNAV (GPS) Z RWY 28L

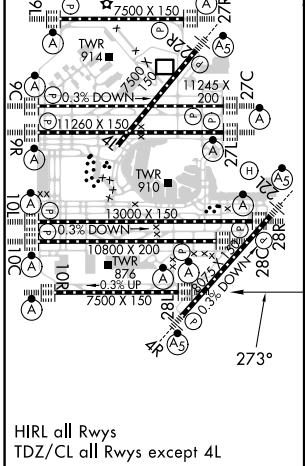
CHICAGO O'HARE INTL (ORD)

RNP APCH.	ALSF-2	MISSED APPROACH: Climb 1200 then climbing left turn to 4000 direct CGT VORTAC and hold.
▽ Simultaneous approach authorized. LNAV procedure NA during simultaneous operations. For uncompensated Baro-VNAV systems, LNAV/VNAV NA below -19C or above 54C. Use of FD or AP required during simultaneous operations.		

D-ATIS 135.4 282.225	CHICAGO APP CON 119.0 292.125	O'HARE TOWER 133.0 348.0	GND CON (TWR NORTH) 124.125 (TWR SOUTH) 118.05 226.675 (ALL TWRs)	(TWR CENTER) (OBND) 121.75 (IBND) 121.9	CLNC DEL 121.6	CPDLC
--	--	------------------------------------	---	---	--------------------------	-------



ELEV 680	D	TDZE 667
----------	----------	----------



1200	4000	CGT						
*LNAV only.								
	ALKYL 1.8 NM to RWY 28L	CAKOS	FITAR	HANSO	JAVON	KEGNE	LYSIN	
	*1.1 NM to RWY 28L	2200	4000	5000	6000	7000	8000	9000
	RWY 28L	*1280	2200					
	1.1 NM	0.7	2.9 NM	6.4 NM	3.1 NM	3.1 NM	3.1 NM	3.1 NM
CATEGORY	A		B		C		D	
LPV DA			867/18		200 (200-1/2)			
LNAV/VNAV DA			1090/40		423 (500-3/4)			
LNAV MDA	1060/24		393 (400-1/2)		1060/35		393 (400-5/8)	
GP 3.00° TCH 55								

EC-3, 15 MAY 2025 to 12 JUN 2025

EC-3, 15 MAY 2025 to 12 JUN 2025