

CHICAGO, ILLINOIS

# RNAV (GPS) PRM Y RWY 10R

(CLOSE PARALLEL)

CHICAGO O'HARE INTL (ORD)

WAAS CH <b>77937</b> <b>W10D</b>	APP CRS <b>090°</b>	Rwy Idg TDZE Apt Elev	<b>7500</b> <b>680</b> <b>680</b>
--	------------------------	-----------------------------	---

RNP APCH.

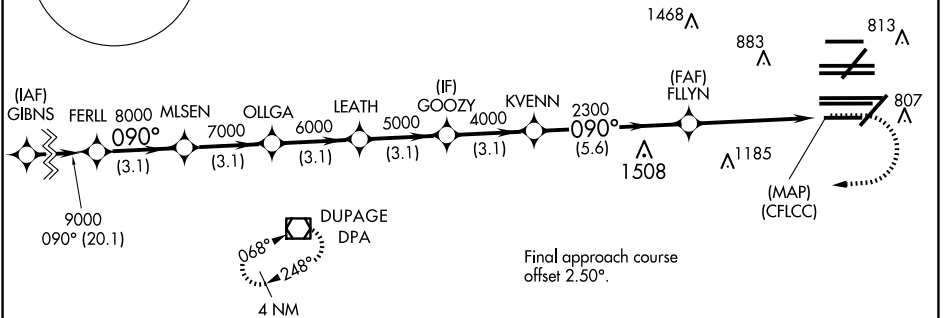
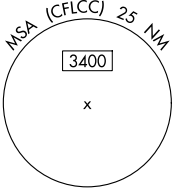
Simultaneous approach authorized. Dual VHF comm required. See additional requirements on AAUP. For uncompensated Baro-VNAV systems, LNAV/VNAV NA below -19°C or above 54°C. Use of FD or AP providing RNAV track guidance required during simultaneous operations. For inop ALS, increase LNAV/VNAV all Cats visibility to 1 $\frac{1}{2}$  SM.

ALS-2



MISSED APPROACH: Climb to 1200 then climbing right turn to 4000 direct DPA VOR/DME and hold.

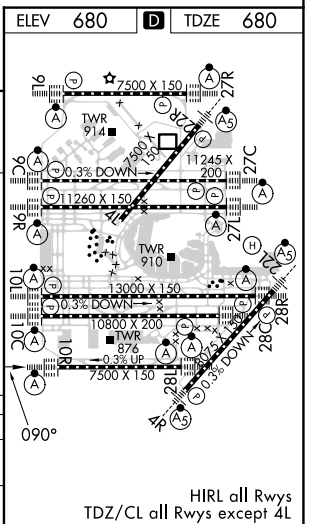
D-ATIS <b>135.4</b> <b>282.225</b>	CHICAGO APP CON <b>119.0 292.125</b>	O'HARE TOWER <b>133.0 348.0</b> <b>PRM 128.05</b>	GND CON (TWR CENTER) <b>124.125</b> (TWR NORTH) <b>118.05</b> (TWR SOUTH) <b>226.675</b> (ALL TWRs)	<b>121.75</b> (OBND) <b>121.9</b> (IBND)	CLNC DEL <b>121.6</b>	CPDLC
--	---	---	--	---	--------------------------	-------



EC-3, 15 MAY 2025 to 12 JUN 2025

EC-3, 15 MAY 2025 to 12 JUN 2025

	FERLL	MLSN	OLLGA	LEATH	GOOZY	KVENN	FFLYN	(CFLCC)
	9000	8000	7000	6000	5000	4000	2300	
	GP 3.00							
	TCH 55							
	3.1 NM	3.1 NM	3.1 NM	3.1 NM	3.1 NM	5.6 NM	4.9 NM	
CATEGORY	A		B		C		D	
LPV	DA	930/24		250 (300- $\frac{1}{2}$ )				
LNAV/VNAV	DA	1157/50		477 (500-1)				



CHICAGO, ILLINOIS  
Orig-B 22APR21

41°59'N-87°54'W

CHICAGO O'HARE INTL (ORD)

# RNAV (GPS) PRM Y RWY 10R (CLOSE PARALLEL)

HIRL all Rws  
TDZ/CL all Rws except 4L