

CHICAGO, ILLINOIS

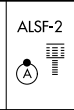
AL-166 (FAA) RNAV (GPS) PRM RWY 28C

(CLOSE PARALLEL)

CHICAGO O'HARE INTL (ORD)

|  |                        |  |
|--|------------------------|--|
| WAAS<br>CH <b>53639</b><br><b>W28B</b> | APP CRS<br><b>273°</b> | Rwy Idg <b>10800</b><br>TDZE <b>651</b><br>Apt Elev <b>680</b> |
|--|------------------------|--|

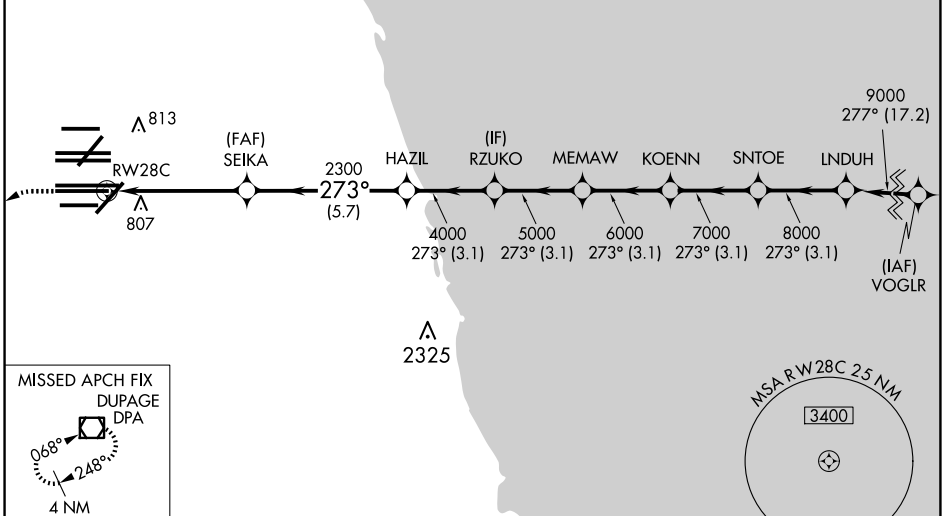
▼ For uncompensated Baro-VNAV systems, LNAV/VNAV NA below -19°C (-2°F) or above 54°C (130°F). DME/DME RNP-0.3 NA. Use of FD or AP providing RNAV track guidance required during simultaneous operations. Simultaneous approach authorized. Dual VHF comm required. See additional requirements on AAUP.



MISSED APPROACH:  
Climb to 1100 then  
climbing left turn to  
4000 direct DPA  
VOR/DME and hold.

|  |  |   |   |   |                          |       |
|--|--|---|---|---|--------------------------|-------|
| D-ATIS<br><b>135.4</b><br><b>282.225</b> | CHICAGO<br>APP CON<br><b>119.0 292.125</b> | O'HARE TOWER<br><b>120.75 348.0</b><br><b>PRM 119.625</b> | GND CON<br><b>124.125</b> (TWR NORTH)<br><b>118.05</b> (TWR SOUTH)<br><b>226.675</b> (ALL TWRs) | (TWR CENTER)<br><b>121.75</b> (OBND)<br><b>121.9</b> (IBND) | CLNC DEL<br><b>121.6</b> | CPDLC |
|--|--|---|---|---|--------------------------|-------|

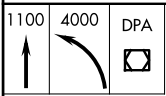
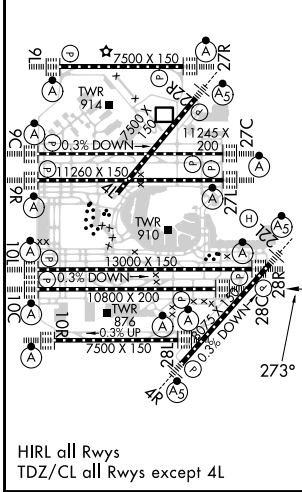
# RADAR REQUIRED



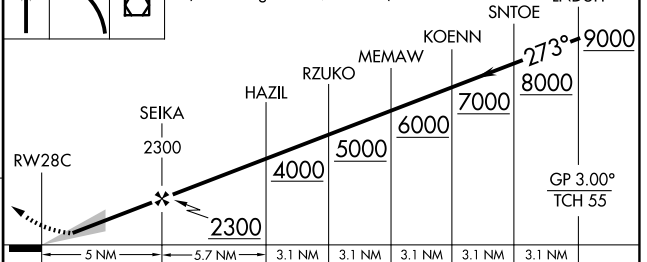
EC-3, 15 MAY 2025 to 12 JUN 2025

EC-3, 15 MAY 2025 to 12 JUN 2025

|                 |          |                 |
|-----------------|----------|-----------------|
| ELEV <b>680</b> | <b>D</b> | TDZE <b>651</b> |
|-----------------|----------|-----------------|



VGSI and RNAV glidepath not coincident  
(VGSI Angle 3.00/TCH 80).



|              |   |         |             |   |
|--------------|---|---------|-------------|---|
| CATEGORY     | A | B       | C           | D |
| LPV DA       |   | 851/18  | 200 (200-½) |   |
| LNAV/VNAV DA |   | 1094/50 | 443 (500-1) |   |

CHICAGO, ILLINOIS  
Orig-A 17AUG17

41°59'N-87°54'W

CHICAGO O'HARE INTL (ORD)

# RNAV (GPS) PRM RWY 28C (CLOSE PARALLEL)