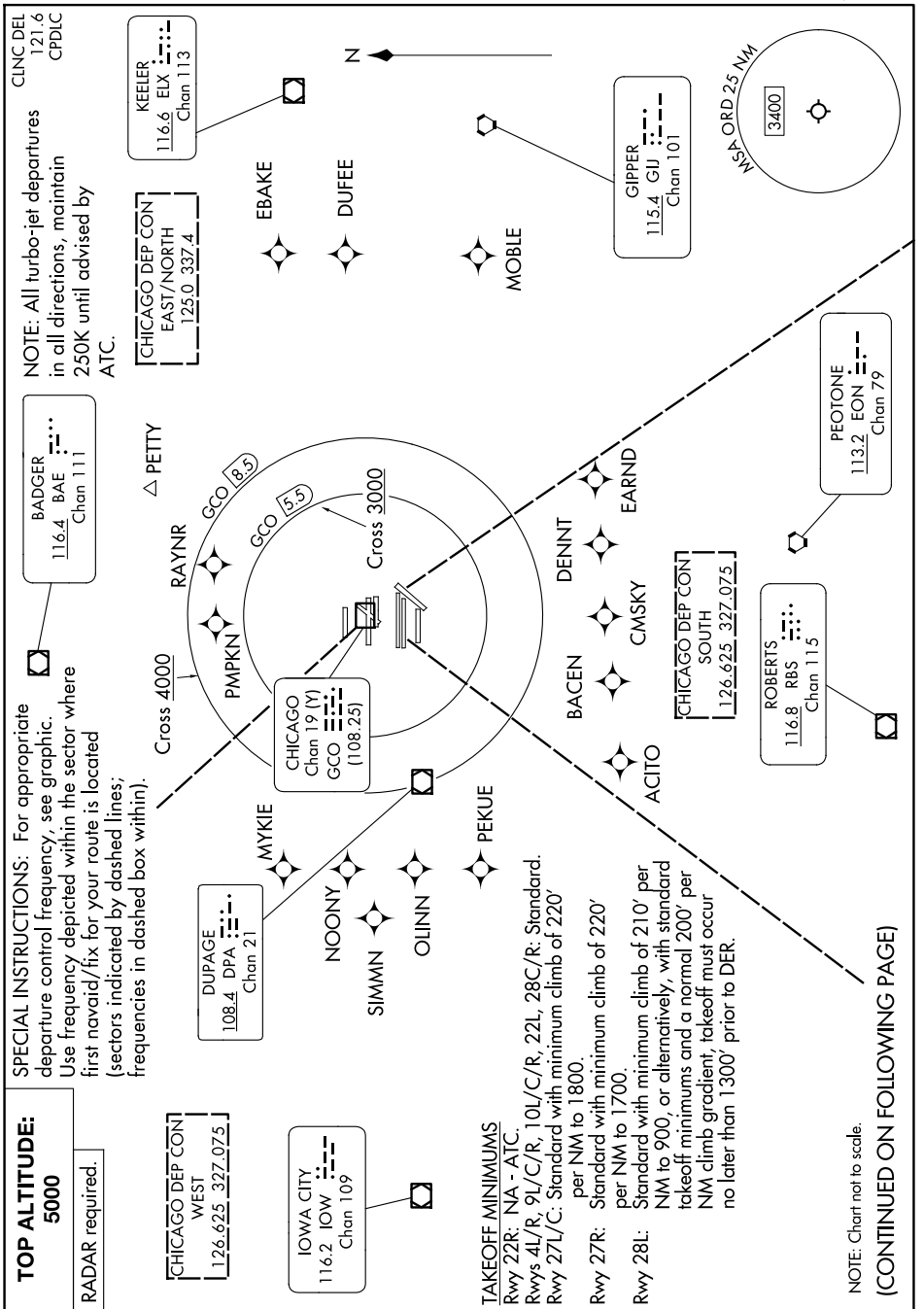


O'HARE EIGHT DEPARTURE



EC-3, 15 MAY 2025 to 12 JUN 2025

EC-3, 15 MAY 2025 to 12 JUN 2025

TOP ALTITUDE:
5000
RADAR required.

CHICAGO DEP CON
WEST
126.625 327.075

IOWA CITY
116.2 IOW
Chan 109

TAKEOFF MINIMUMS
Rwy 22R: NA - ATC.
Rwys 4L/R, 9L/C/R, 10L/C/R: Standard.
Rwy 27L/C: Standard with minimum climb of 220' per NM to 1800'.
Rwy 27R: Standard with minimum climb of 220' per NM to 1700'.
Rwy 28L: Standard with minimum climb of 210' per NM to 900, or alternatively, with standard takeoff minimums and a normal 200' per NM climb gradient, takeoff must occur no later than 1300' prior to DER.

NOTE: Chart not to scale.
(CONTINUED ON FOLLOWING PAGE)

O'HARE EIGHT DEPARTURE