

LOC/DME I-BYW <b>110.9</b> Chan <b>46</b>	APP CRS <b>091°</b>	Rwy Idg TDZE Apt Elev	<b>7500</b> <b>680</b> <b>680</b>
---	------------------------	-----------------------------	---

# ILS PRM Y RWY 10R (CLOSE PARALLEL)

CHICAGO O'HARE INTL (ORD)

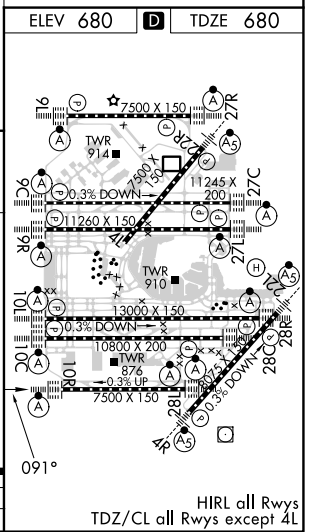
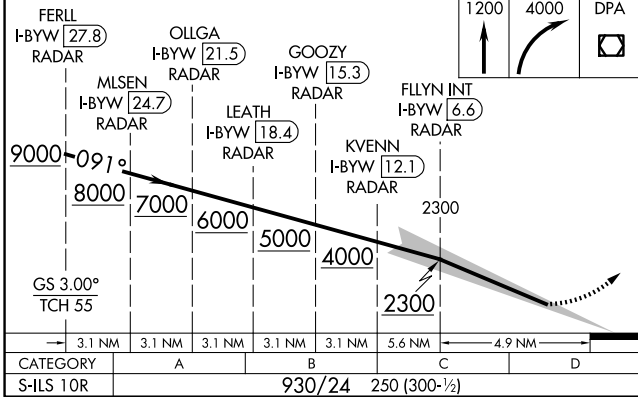
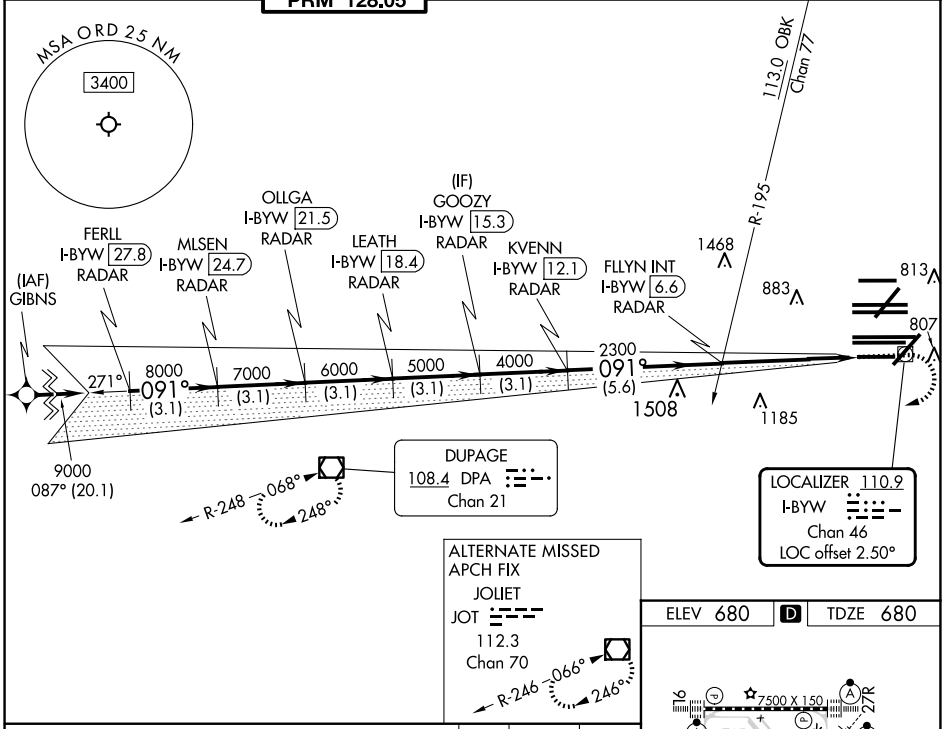
RNAV 1-GPS or RADAR required for procedure entry. DME or RADAR required.  
From GIBNS: RNAV-1 GPS required.

Simultaneous approach authorized. Use of FD or AP required during simultaneous operations. Dual VHF Comm required. See additional requirements on AAUP.



MISSED APPROACH: Climb to 1200 then climbing right turn to 4000 direct DPA VOR/DME and hold.

D-ATIS <b>135.4</b> <b>282.225</b>	CHICAGO APP CON <b>119.0 292.125</b>	O'HARE TOWER <b>133.0 348.0</b> <b>PRM 128.05</b>	GND CON (TWR NORTH) <b>124.125</b> (TWR SOUTH) <b>118.05</b> (ALL TWRS) <b>226.675</b>	(TWR CENTER) <b>121.75</b> (OBND) <b>121.9</b> (IBND)	CLNC DEL <b>121.6</b>	CPDLC
--	---	---	---	---	--------------------------	-------



EC-3, 15 MAY 2025 to 12 JUN 2025

EC-3, 15 MAY 2025 to 12 JUN 2025