

ILS PRM RWY 28C (CLOSE PARALLEL) CHICAGO O'HARE INTL (ORD)

LOC/DME I-VZE 108.95 Chan 26 (Y)	APP CRS 273°	Rwy ldg 10800 TDZE 651 Apt Elev 680
--	------------------------	--

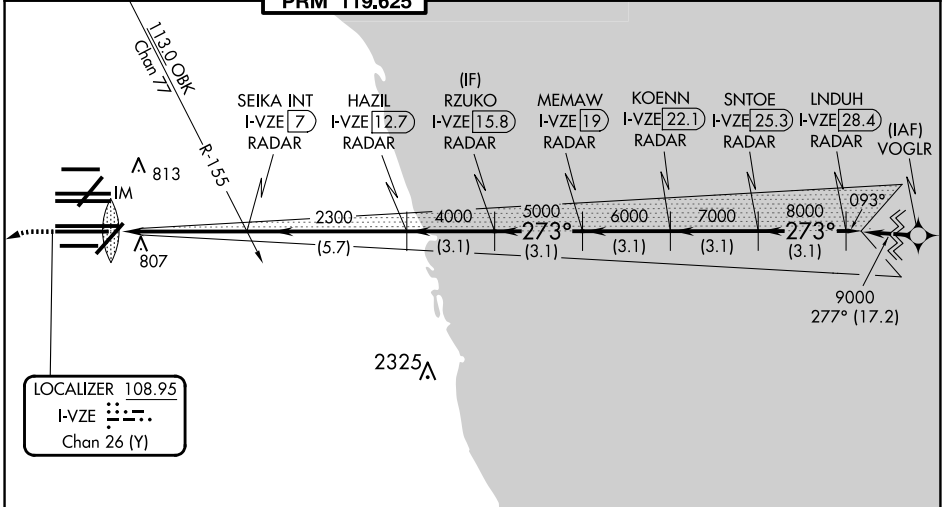
Aircraft not GPS equipped - RADAR required for procedure entry. DME or RADAR required.
From VOGLR: RNAV 1-GPS required.

ALSIF-2

MISSED APPROACH: Climb to 1100 then climbing left turn to 4000 on heading 215° and DPA VOR/DME R-082 to DPA VOR/DME and hold.

Simultaneous approach authorized. Use of FD or AP required during simultaneous operations. Dual VHF comm required. See additional requirements on AAUP.

D-ATIS 135.4 282.225	CHICAGO APP CON 119.0 292.125	O'HARE TOWER 120.75 348.0 PRM 119.625	GND CON (TWR NORTH) 124.125 (TWR SOUTH) 118.05 (ALL TWRS) 226.675	(TWR CENTER) (OBND) 121.75 (IBND) 121.9	CLNC DEL 121.6	CPDLC
--	---	---	--	--	--------------------------	-------



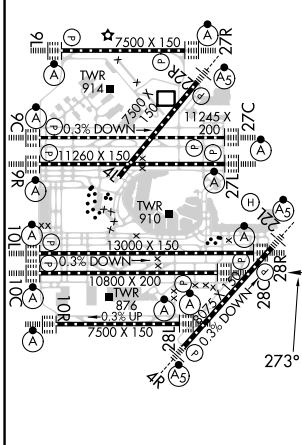
LOCALIZER 108.95
I-VZE
Chan 26 (Y)

MISSED APCH FIX

DUPAGE
DPA
108.4
Chan 21
R-248-068°
248°

MSA ORD 25 NM
3400

ELEV 680	D	TDZE 651
----------	---	----------



HIRL all Rwy's
TDZ/CL all Rwy's except 4L

1100	4000	DPA R-082	DPA	RZUKO I-VZE 15.8 RADAR	KOENN I-VZE 22.1 RADAR	LNDUH I-VZE 28.4 RADAR
2300	4000	5000	6000	7000	8000	9000
0.1	4.9 NM	5.7 NM	3.1 NM	3.1 NM	3.1 NM	3.1 NM
CATEGORY	A	B	C	D		
S-ILS 28C	851/18 200 (200-1/2)					

GS 3.00°
TCH 55

VGSI and ILS glidepath not coincident (VGSI Angle 3.00/TCH 80).

EC-3, 15 MAY 2025 to 12 JUN 2025

EC-3, 15 MAY 2025 to 12 JUN 2025