

# ILS PRM RWY 10C (SA CAT I) (CLOSE PARALLEL)

CHICAGO O'HARE INTL (ORD)

LOC/DME I-SXH <b>108.95</b> Chan 26(Y)	APP CRS <b>093°</b>	Rwy Ldg <b>10540</b> TDZE <b>669</b> Apt Elev <b>680</b>
--	------------------------	--

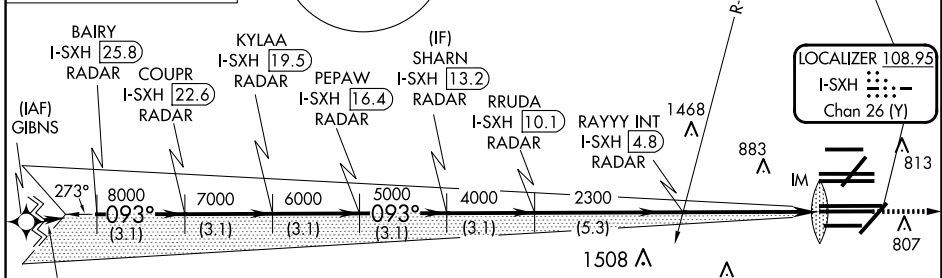
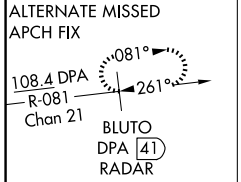
RNAV 1-GPS or RADAR required for procedure entry. DME or RADAR required.  
From GIBNS: RNAV-1 GPS required.

Requires specific OPSPEC, MSPEC, or LOA approval and use of HUD to DH. Simultaneous approach authorized. Use of FD or AP required during simultaneous operations. Dual VHF comm required. See additional requirements on AAUP.

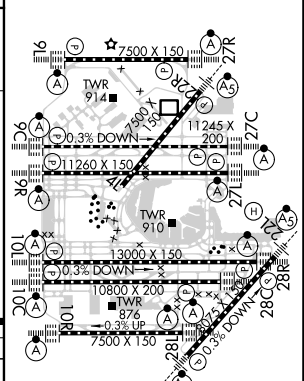
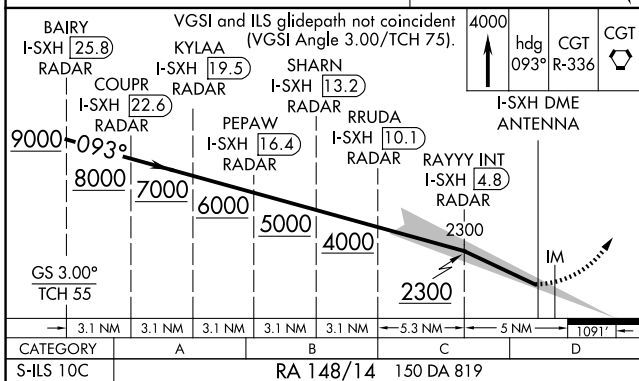
ALSF-2

MISSED APPROACH: Climb to 4000 on heading 093° and CGT VORTAC R-336 to CGT VORTAC and hold.

D-ATIS <b>135.4</b> <b>282.225</b>	CHICAGO APP CON <b>119.0 292.125</b>	O'HARE TOWER <b>120.75 348.0</b> <b>PRM 119.625</b>	GND CON (TWR CENTER) <b>124.125</b> (TWR NORTH) <b>118.05</b> (TWR SOUTH) <b>226.675</b> (ALL TWRS)	(TWR CENTER) <b>121.75</b> (OBND) <b>121.9</b> (IBND)	CLNC DEL <b>121.6</b>	CPDLC
--	---	---	--	--	--------------------------	-------



ELEV 680	TDZE 669
----------	----------



SA CATEGORY I ILS - SPECIAL AIRCREW & AIRCRAFT CERTIFICATION REQUIRED

HIRL all Rwys  
TDZ/CL all Rwys except 4L

EC-3, 15 MAY 2025 to 12 JUN 2025

EC-3, 15 MAY 2025 to 12 JUN 2025