

LOC/DME I-JAV 110.5 Chan 42	APP CRS 093°	Rwy Idg 11260 TDZE 668 Apt Elev 680
--	------------------------	--

ILS RWY 9R (CAT II & III)

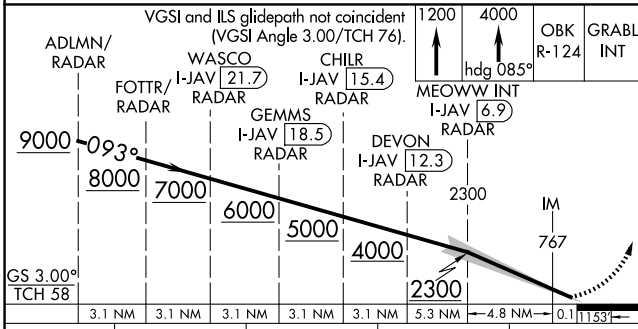
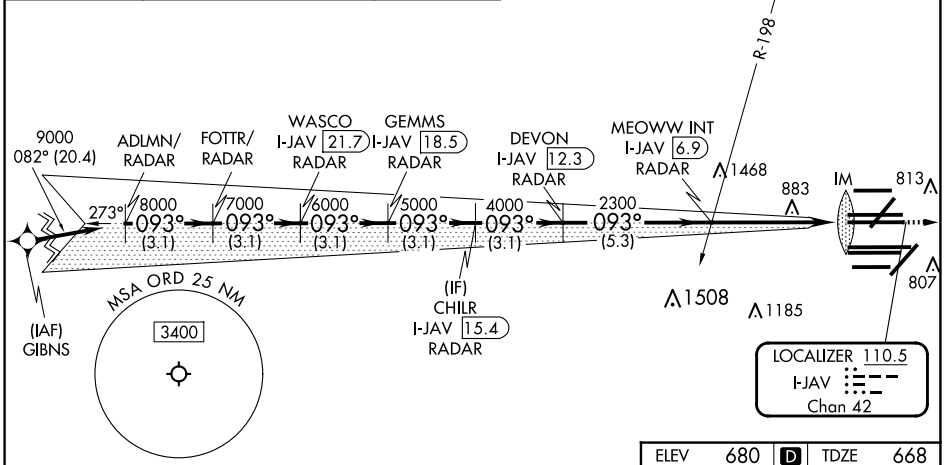
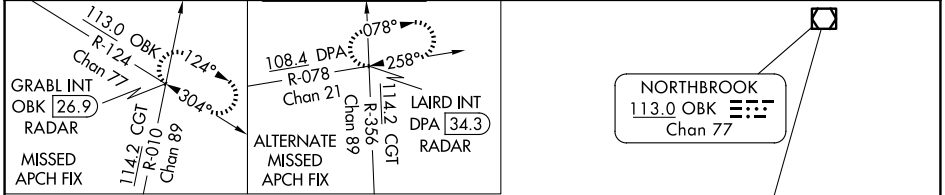
CHICAGO O'HARE INTL (ORD)

RNP APCH-GPS from GIBNS.
Aircraft not GPS equipped - RADAR required for procedure entry. RADAR or DME required.

ALSF-2 (A) MISSED APPROACH: Climb to 1200 then climb to 4000 on heading 085° and OBK VOR/DME R-124 to GRABL INT/OBK 26.9 DME/RADAR and hold.

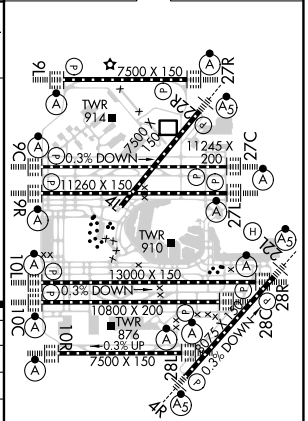
Simultaneous approach authorized.

D-ATIS 135.4 282.225	CHICAGO APP CON 119.0 292.125	O'HARE TOWER 126.9 348.0	GND CON (TWR CENTER) 124.125 (TWR NORTH) 118.05 (TWR SOUTH) 226.675 (ALL TWRs)	(TWR CENTER) 121.75 (OBND) 121.9 (IBND)	CLNC DEL 121.6	CPDLC
--	---	------------------------------------	--	---	--------------------------	-------



ELEV 680	D	TDZE 668
----------	---	----------

CATEGORY	A	B	C	D
S-ILS 9R	CAT II RA 99/12		100 DA 768	
S-ILS 9R	CAT III RVR 06			



CATEGORY II & III ILS - SPECIAL AIRCREW & AIRCRAFT CERTIFICATION REQUIRED

HIRL all Rwys
TDZ/CL all Rwys except 4L

EC-3, 15 MAY 2025 to 12 JUN 2025

EC-3, 15 MAY 2025 to 12 JUN 2025