

(WATFO6.WATFO) 23222

WATFO SIX DEPARTURE (RNAV)

AL-164 (FAA)

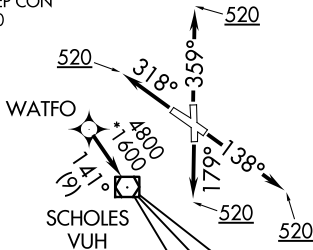
SCHOLES INTL AT GALVESTON (GLS)
GALVESTON, TEXAS

ASOS
123.95
CLNC DEL (When twr closed)
135.35
GND CON
118.625
GALVESTON TOWER★
120.575 (CTAF)
HOUSTON DEP CON
134.45 284.0

RNAV 1 - DME/DME/IRU or GPS.

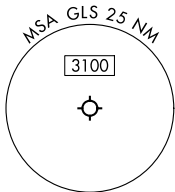
RADAR required.

**TOP ALTITUDE:
ASSIGNED BY ATC**



TAKEOFF MINIMUMS

Rwy 14, 18, 32, 36: Standard with minimum climb of 500'/NM to 520.



NOTE: Chart not to scale.



DEPARTURE ROUTE DESCRIPTION

- TAKEOFF RUNWAY 14: Climb on heading 138° to 520, for RADAR vectors to WATFO, thence. . .
- TAKEOFF RUNWAY 18: Climb on heading 179° to 520, for RADAR vectors to WATFO, thence. . .
- TAKEOFF RUNWAY 32: Climb on heading 318° to 520, for RADAR vectors to WATFO, thence. . .
- TAKEOFF RUNWAY 36: Climb on heading 359° to 520, for RADAR vectors to WATFO, thence. . .

. . . on track 141° to VUH VOR/DME, then on (transition). Maintain ATC assigned altitude.
Expect filed altitude 10 minutes after departure.

- ANKRR TRANSITION (WATFO6.ANKRR)
- KELPP TRANSITION (WATFO6.KELPP)
- MUSYL TRANSITION (WATFO6.MUSYL)

WATFO SIX DEPARTURE (RNAV)

(WATFO6.WATFO) 10AUG23

GALVESTON, TEXAS
SCHOLES INTL AT GALVESTON (GLS)

SC-5, 15 MAY 2025 to 12 JUN 2025

SC-5, 15 MAY 2025 to 12 JUN 2025