

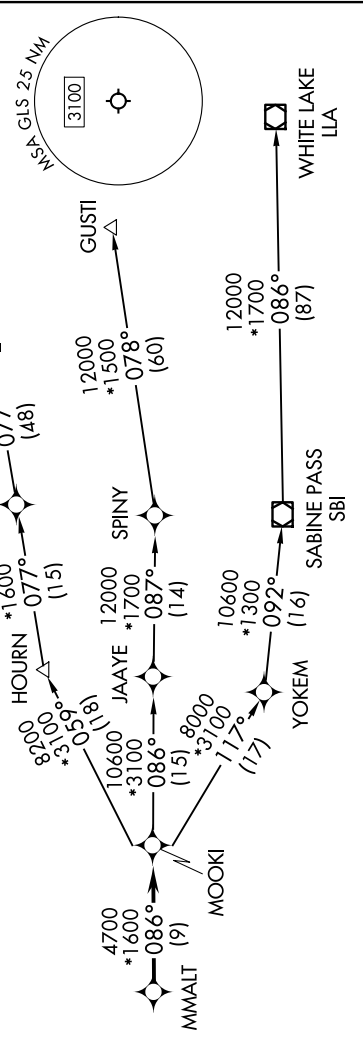
MMALT SEVEN DEPARTURE (RNAV)

SC-5, 15 MAY 2025 to 12 JUN 2025

**TOP ALTITUDE:
ASSIGNED BY ATC**

RNAV 1 - DME/DME/IRU or GPS.
RADAR required.

HOUSTON DEP CON
134.45 284.0
ASOS
123.95
CLNC DEL (When twr closed)
135.35
GND CON
118.625
GALVESTON TOWER*
120.575 (CTAF)



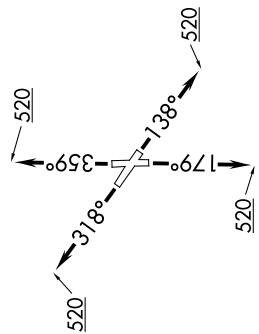
NOTE: GUSTI and LCH Transitions ATC assigned only for aircraft departing AXH, EFD, GLS, HPY, IWS, LBX, LVJ, SGR, TME, T00, T41 and 54T.

DEPARTURE ROUTE DESCRIPTION

- TAKEOFF RUNWAY 14: Climb on heading 138° to 520, for RADAR vectors to MMALT, thence. . . .
 - TAKEOFF RUNWAY 18: Climb on heading 179° to 520, for RADAR vectors to MMALT, thence. . . .
 - TAKEOFF RUNWAY 32: Climb on heading 318° to 520, for RADAR vectors to MMALT, thence. . . .
 - TAKEOFF RUNWAY 36: Climb on heading 359° to 520, for RADAR vectors to MMALT, thence. . . .
- . . . on track 086° to MOOKI, then on (transition). Maintain ATC assigned altitude.
Expect filed altitude 10 minutes after departure.

GUSTI TRANSITION (MMALT7.GUSTI)
LAKE CHARLES TRANSITION (MMALT7.LCH)
WHITE LAKE TRANSITION (MMALT7.LLA)

MMALT SEVEN DEPARTURE (RNAV)



TAKEOFF MINIMUMS
Rwys 14, 18, 32, 36: Standard with
minimum climb of 500'/NM to 520.

NOTE: Chart not to scale.

SC-5, 15 MAY 2025 to 12 JUN 2025