

# LEONA FOUR DEPARTURE

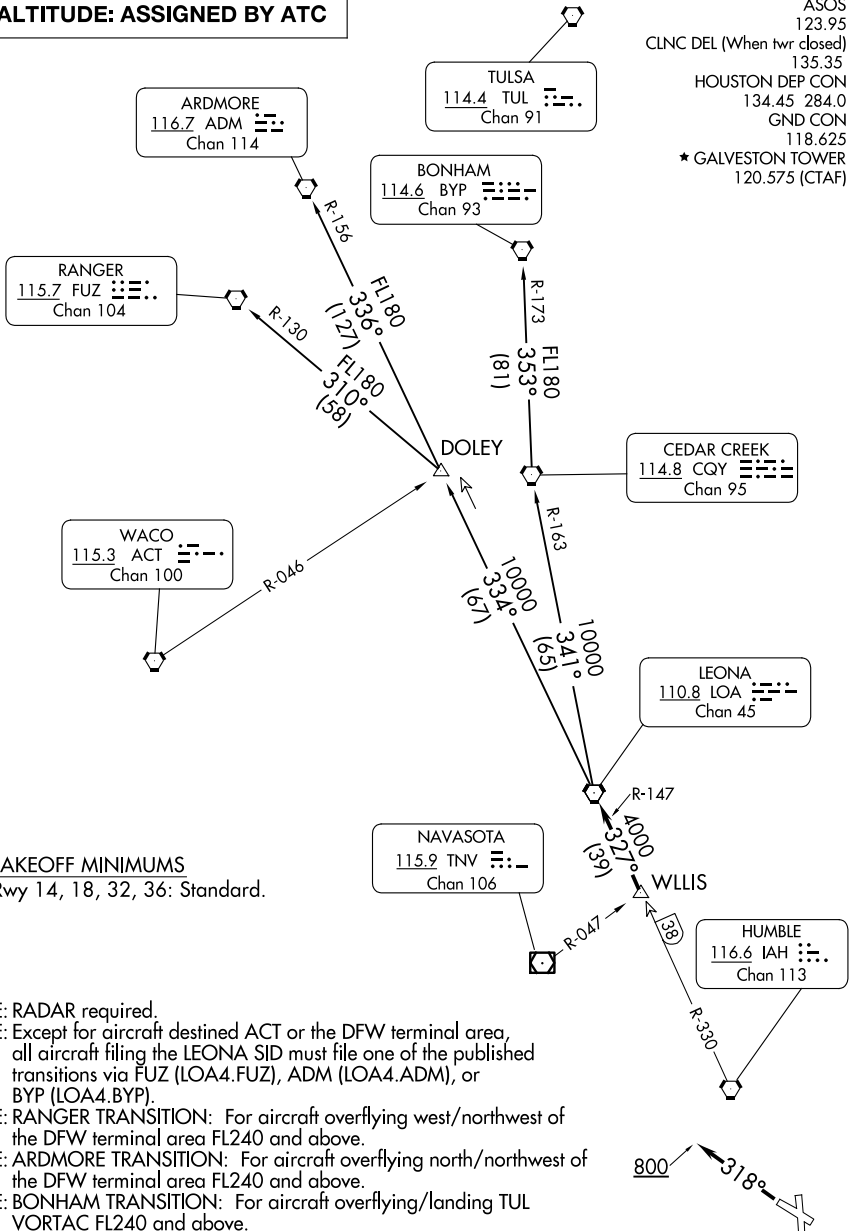
AL-164 (FAA)

SCHOLES INTL AT GALVESTON (GLS)

GALVESTON, TEXAS

**TOP ALTITUDE: ASSIGNED BY ATC**

ASOS  
123.95  
CLNC DEL (When twr closed)  
135.35  
HOUSTON DEP CON  
134.45 284.0  
GND CON  
118.625  
★ GALVESTON TOWER  
120.575 (CTAF)



TAKEOFF MINIMUMS  
Rwy 14, 18, 32, 36: Standard.

- NOTE: RADAR required.
- NOTE: Except for aircraft destined ACT or the DFW terminal area, all aircraft filing the LEONA SID must file one of the published transitions via FUZ (LOA4.FUZ), ADM (LOA4.ADM), or BYP (LOA4.BYP).
- NOTE: RANGER TRANSITION: For aircraft overflying west/northwest of the DFW terminal area FL240 and above.
- NOTE: ARDMORE TRANSITION: For aircraft overflying north/northwest of the DFW terminal area FL240 and above.
- NOTE: BONHAM TRANSITION: For aircraft overflying/landing TUL VORTAC FL240 and above.

NOTE: Chart not to scale.

(CONTINUED ON FOLLOWING PAGE)

SC-5, 15 MAY 2025 to 12 JUN 2025

SC-5, 15 MAY 2025 to 12 JUN 2025