

FRESNO, CALIFORNIA

HI-LOC Z RWY 11L

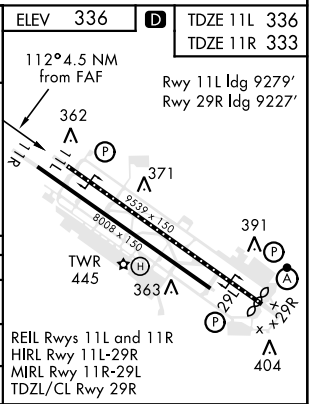
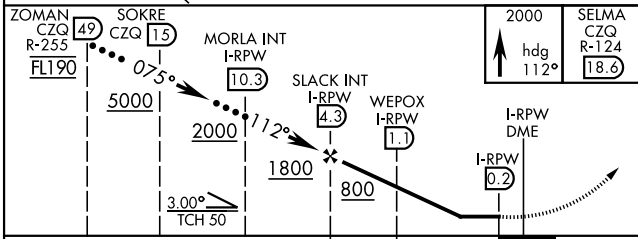
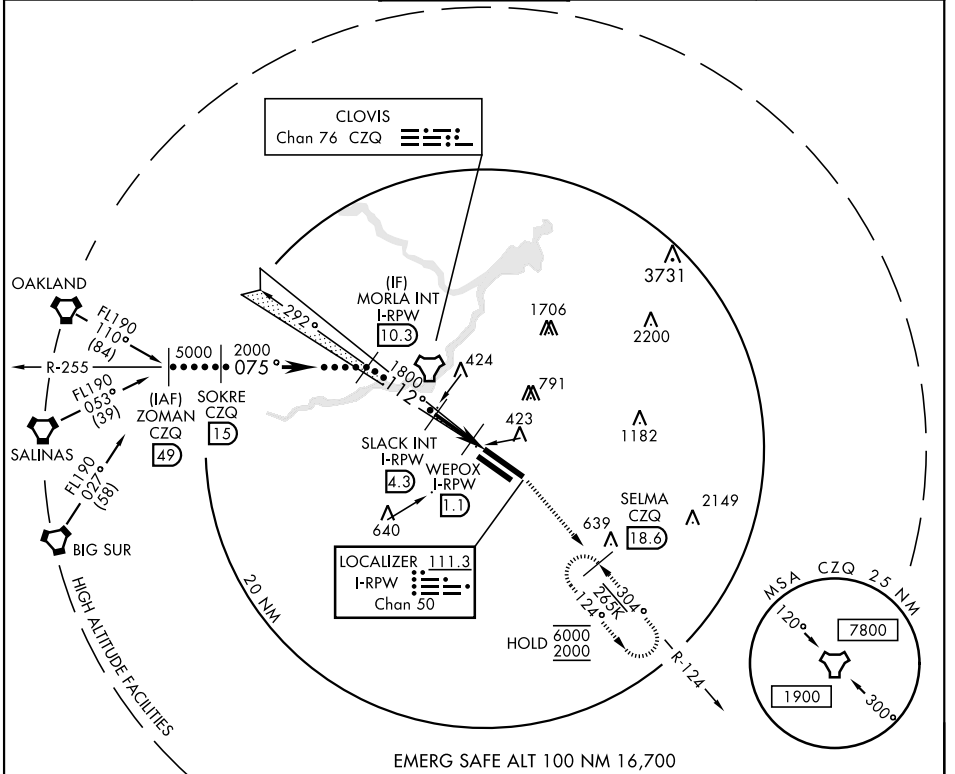
LOC/DME I-RPW 111.3 Chan 50	APCH CRS 112°	Rwy Idg 11L 9279 11R 8008	TDZE 11L 336 11R 333	Arprt Elev 336
---	-------------------------	---	--	--------------------------

AL-162 [USAF] FRESNO YOSEMITE INTL (KFAT)

DME required.

MISSED APPROACH: Climb to 2000 on heading 112° and CZQ TACAN R-124 to SELMA 18.6 DME and hold.

ATIS 121.35 273.6	APP CON 119.6 351.95	TOWER 118.2 251.1	GND CON 121.7 348.6	CLNC DEL 124.35 348.6
-----------------------------	--------------------------------	-----------------------------	-------------------------------	---------------------------------



CATEGORY	C	D	E
S-LOC 11L	680/55	344	(400-1¼)
SIDE STEP RWY 11R	680-1½ 347 (400-1½)	680-2	347 (400-2)
C CIRCLING	920-1½ 584 (600-1½)	920-2 584 (600-2)	1140-2¾ 804 (900-2¾)

FRESNO, CALIFORNIA

36°47'N-119°43'W

FRESNO YOSEMITE INTL (KFAT)

Amtd 3 10OCT19

HI-LOC Z RWY 11L

SW-2, 15 MAY 2025 to 12 JUN 2025

SW-2, 15 MAY 2025 to 12 JUN 2025