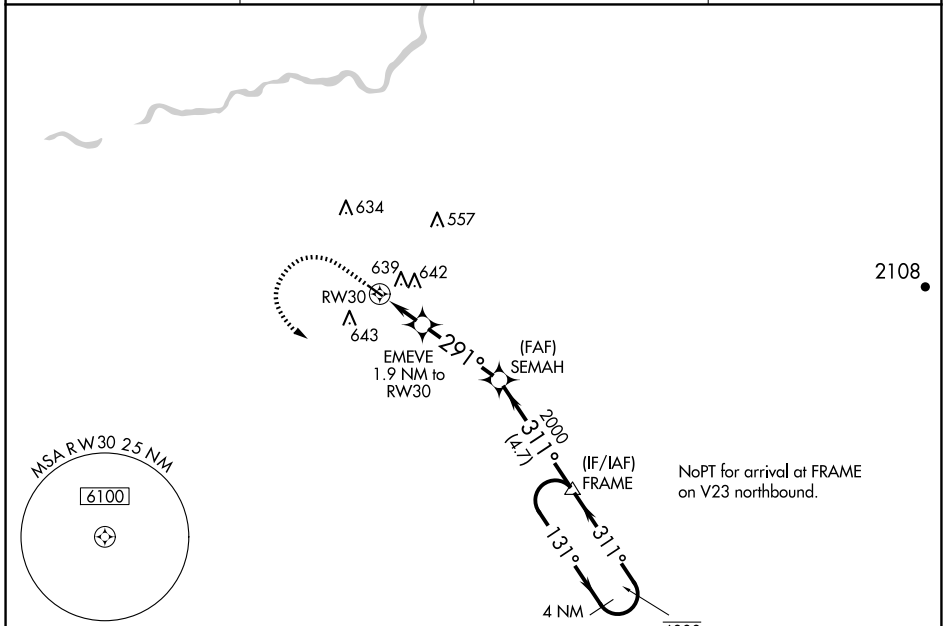


APP CRS 291°	Rwy Idg 3089
	TDZE 280
	Apt Elev 280

RNAV (GPS) RWY 30

FRESNO CHANDLER EXEC (F'CH)

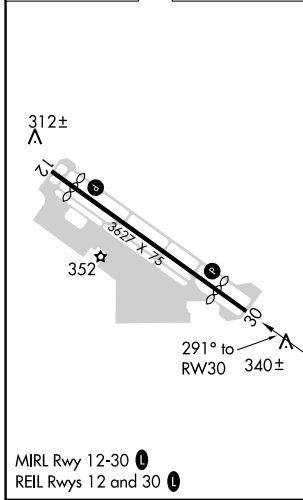
RNP APCH. ▼ Straight-in Rwy 30 NA at night, Circling Rwy 30 NA at night. Rwy 30 helicopter visibility reduction below 1 SM NA.		MISSED APPROACH: Climb to 1000 then climbing left turn to 2000 direct FRAME and hold.	
AWOS-3 135.225	FRESNO APP CON 119.0 323.25	CLNC DEL 119.0	UNICOM 123.0 (CTAF) 0



SW-2, 15 MAY 2025 to 12 JUN 2025

SW-2, 15 MAY 2025 to 12 JUN 2025

ELEV 280	TDZE 280
----------	----------



	1000	2000	FRAME	SEMAH	FRAME	4 NM Holding Pattern
	↑	↶	△			
	EMEVE 1.9 NM to RW30 RW30		3.00° TCH 40 2000	311° 2000	131° 6000 2000	
	-1.9		3.4 NM	4.7 NM		
CATEGORY	A		B		C	D
LNAV MDA	800-1		520 (600-1)		800-1 3/8 520 (600-1 3/8)	NA
C CIRCLING	960-1		680 (700-1)		960-2 680 (700-2)	NA