

# KINGDOM FIVE DEPARTURE

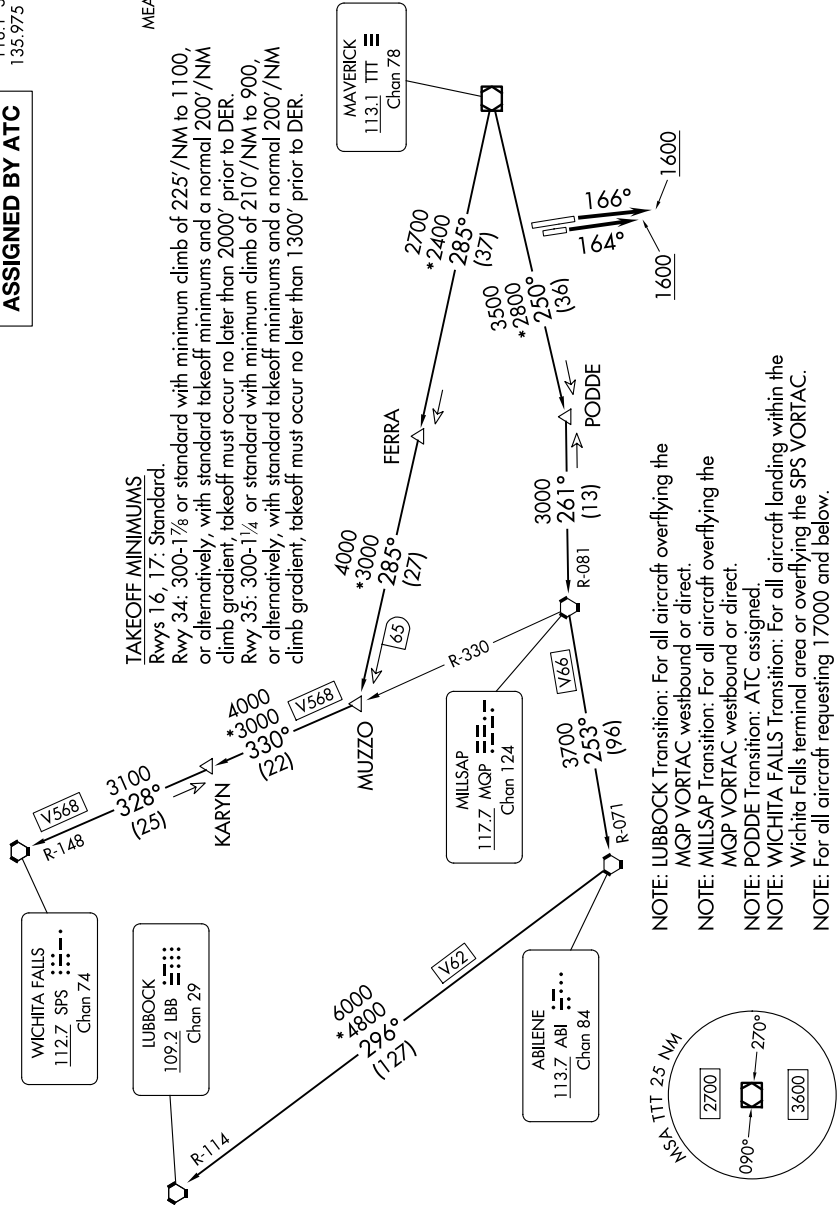
SC-2, 15 MAY 2025 to 12 JUN 2025

RADAR and DME required.

**TOP ALTITUDE:  
ASSIGNED BY ATC**

LONE STAR DEP CON  
 118.1 306.95 (NORTH)  
 135.975 379.9 (SOUTH)  
 ATIS  
 120.7  
 CLNC DEL  
 124.65  
 GND CON  
 121.9  
 MEACHAM TOWER  
 118.3 257.8

**TAKEOFF MINIMUMS**  
 Rwy 16, 17: Standard.  
 Rwy 34: 300-1 $\frac{1}{4}$  or standard with minimum climb of 225'/NM to 1100', or alternatively, with standard takeoff minimums and a normal 200'/NM climb gradient, takeoff must occur no later than 2000' prior to DER.  
 Rwy 35: 300-1 $\frac{1}{4}$  or standard with minimum climb of 210'/NM to 900', or alternatively, with standard takeoff minimums and a normal 200'/NM climb gradient, takeoff must occur no later than 1300' prior to DER.



**NOTE:** LUBBOCK Transition: For all aircraft overlying the MQP VORTAC westbound or direct.  
**NOTE:** MILLSAP Transition: For all aircraft overlying the MQP VORTAC westbound or direct.  
**NOTE:** PODDE Transition: ATC assigned.  
**NOTE:** WICHITA FALLS Transition: For all aircraft landing within the Wichita Falls terminal area or overlying the SPS VORTAC.  
**NOTE:** For all aircraft requesting 17000 and below.

NOTE: Chart not to scale.

(CONTINUED ON FOLLOWING PAGE)

# KINGDOM FIVE DEPARTURE

SC-2, 15 MAY 2025 to 12 JUN 2025