

GARLAND SIX DEPARTURE

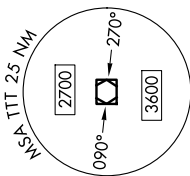
FORT WORTH, TEXAS

SC-2, 15 MAY 2025 to 12 JUN 2025

TOP ALTITUDE: ASSIGNED BY ATC

LONE STAR DEP CON
118.1 306.95 (North)
135.975 379.9 (South)
ATIS
120.7
CLINC DEL
124.65
GND CON
121.9
MEACHAM TOWER
118.3 257.8

NOTE: SOLDO Transition: ATC assigned.



RADAR and DME required.

TEXARKANA
116.3 TKX
Chan 110

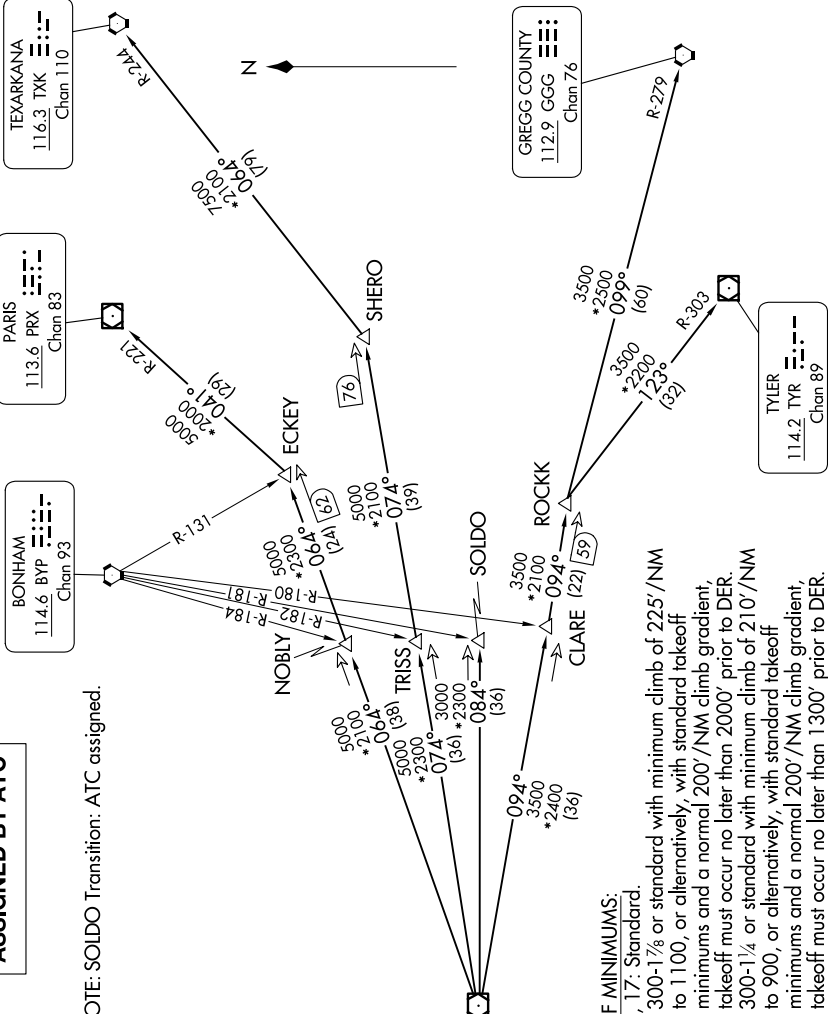
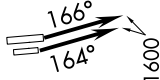
PARIS
113.6 PRX
Chan 83

BONHAM
114.6 BYP
Chan 93

GREGG COUNTY
112.9 GGG
Chan 76

TYLER
114.2 TYR
Chan 89

MAVERICK
113.1 TTT
Chan 78



TAKEOFF MINIMUMS:
 Rwy 16, 17: Standard.
 Rwy 34: 300-1³/₄ or standard with minimum climb of 225'/NM to 1100, or alternatively, with standard takeoff minimums and a normal 200'/NM climb gradient, takeoff must occur no later than 2000' prior to DER.
 Rwy 35: 300-1³/₄ or standard with minimum climb of 210'/NM to 900, or alternatively, with standard takeoff minimums and a normal 200'/NM climb gradient, takeoff must occur no later than 1300' prior to DER.

(CONTINUED ON FOLLOWING PAGE)

NOTE: Chart not to scale.

GARLAND SIX DEPARTURE

(GARL6.TTT) 17APR25

FORT WORTH, TEXAS

FORT WORTH MEACHAM INTL (FTW)

SC-2, 15 MAY 2025 to 12 JUN 2025