

# VOR RWY 4

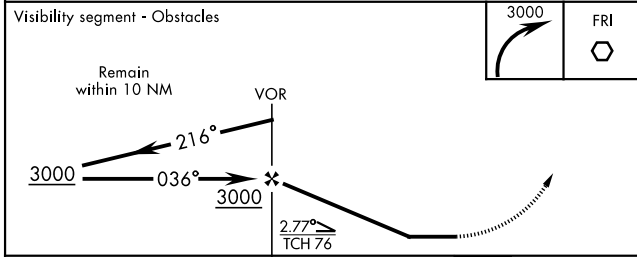
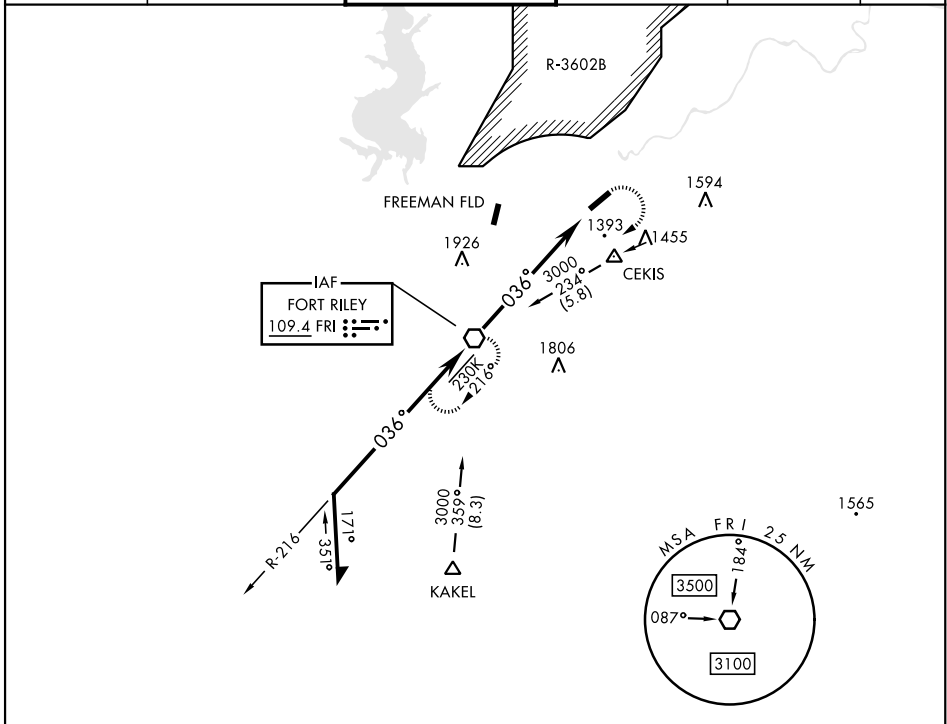
VOR FRI <b>109.4</b>	APCH CRS <b>036°</b>	Rwy ldg 4503 TDZE 1066 Arprt Elev 1066
-------------------------	-------------------------	---

[USA]

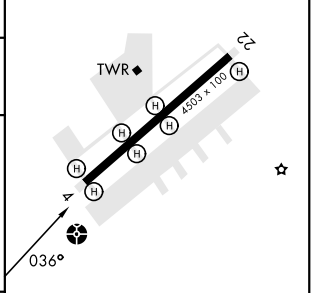
MARSHALL AAF (KFRI)

<p><b>▼</b> * Circling not authorized NW of Rwy 4-22. Rwy 4 helicopter visibility reduction below 3/4 mile not authorized.</p>	<p>ODALS</p>	<p>MISSED APPROACH: Climbing right turn to 3000 direct FRI VOR and hold.</p>
--	--------------	--

ATIS ★ <b>121.025</b>	APP CON <b>121.25 269.05</b>	TOWER ★ <b>126.2 (CTAF) 0 248.65</b>	GND CON <b>140.20 229.4</b>	CLNC DEL <b>119.65</b>	ASR/PAR
--------------------------	---------------------------------	---	--------------------------------	---------------------------	---------



ELEV	1066	TDZE	1066
------	------	------	------



CATEGORY	A	B	C	D
S-4	1800-1 734 (800-1)		1800-2 734 (800-2)	
<b>C</b> CIRCLING *	1800-1 734 (800-1)		1800-2 734 (800-2)	1900-2 834 (900-2 3/4)

HIRL Rwy 4-22 0					
FAF to MAP 6.3 NM					
Knots	60	90	120	150	180
Min:Sec	6:18	4:12	3:09	2:31	2:06

# VOR RWY 4

NC-2, 15 MAY 2025 to 12 JUN 2025

NC-2, 15 MAY 2025 to 12 JUN 2025