

VORTAC MCI 113.25 Chan 79(Y)	APP CRS 296°	Rwy Idg TDZE Apt Elev 771	N/A N/A 771
--	------------------------	---	--------------------------

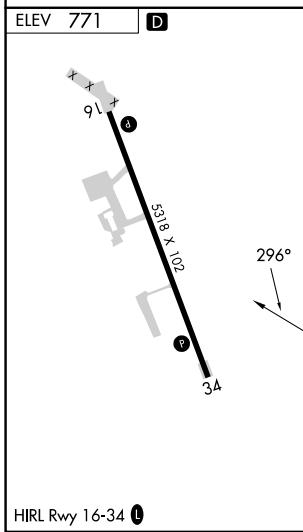
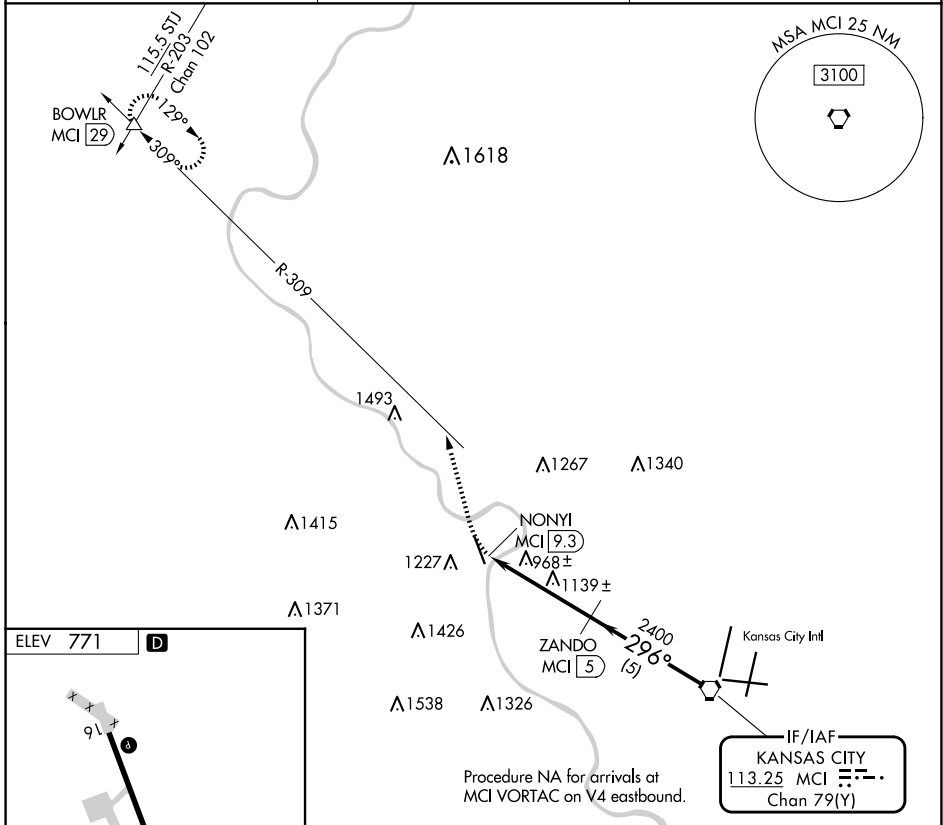
VOR-A
SHERMAN AAF (FLV)

DME required.

Procedure NA at night. Circling NA west of Rwy 16-34.
Use Kansas City Intl altimeter setting.

MISSED APPROACH: Climbing right turn to 3000 on heading 340° and MCI R-309 to BOWLRL and hold.

MCI ASOS 128.375	KANSAS CITY APP CON 124.7 284.7	CTAF 126.2
----------------------------	---	----------------------



3000	MCI R-309	BOWLRL	ZANDO MCI 5	MCI VORTAC
hdg 340°		△		
NONYI MCI 9.3			2400	4000
	4.3 NM		5 NM	
296°				
CATEGORY	A	B	C	D
CIRCLING	1460-1	689 (700-1)	1500-2 729 (800-2)	1640-2¾ 869 (900-2¾)

NC-2, 15 MAY 2025 to 12 JUN 2025

NC-2, 15 MAY 2025 to 12 JUN 2025