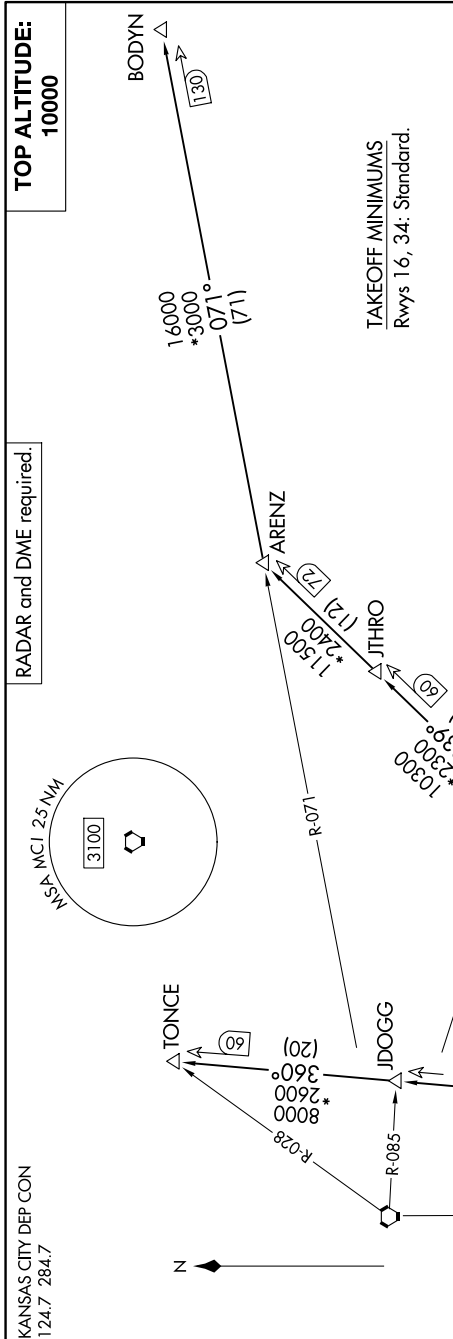


# ROYAL TWO DEPARTURE

NC-2, 15 MAY 2025 to 12 JUN 2025



**DEPARTURE ROUTE DESCRIPTION**

**TAKEOFF RUNWAY 16:** Climb on heading 155° to 1700 before turning southwest, thence . . . .

. . . . climb on assigned heading for RADAR vectors to appropriate route. Maintain 10000, expect filed altitude 10 minutes after departure.

**TAKEOFF RUNWAY 34:** Climb on assigned heading for RADAR vectors to appropriate route. Maintain 10000, expect filed altitude 10 minutes after departure.

**ARENZ TRANSITION (ROYAL2.ARENZ):** From over MCI VORTAC on MCI R-039 to ARENZ.

**BODYN TRANSITION (ROYAL2.BODYN):** From over MCI VORTAC on MCI R-039 to ARENZ, then on STJ R-071 to BODYN.

**TONCE TRANSITION (ROYAL2.TONCE):** From over MCI VORTAC on MCI R-360 to TONCE.

# ROYAL TWO DEPARTURE

NC-2, 15 MAY 2025 to 12 JUN 2025