

# VOR/DME RWY 36

VOR/DME FTK <b>109.6</b> Chan <b>33</b>	APCH CRS <b>349°</b>	Rwy ldg TDZE <b>5184</b> <b>740</b> Arprt Elev <b>754</b>
---	-------------------------	--

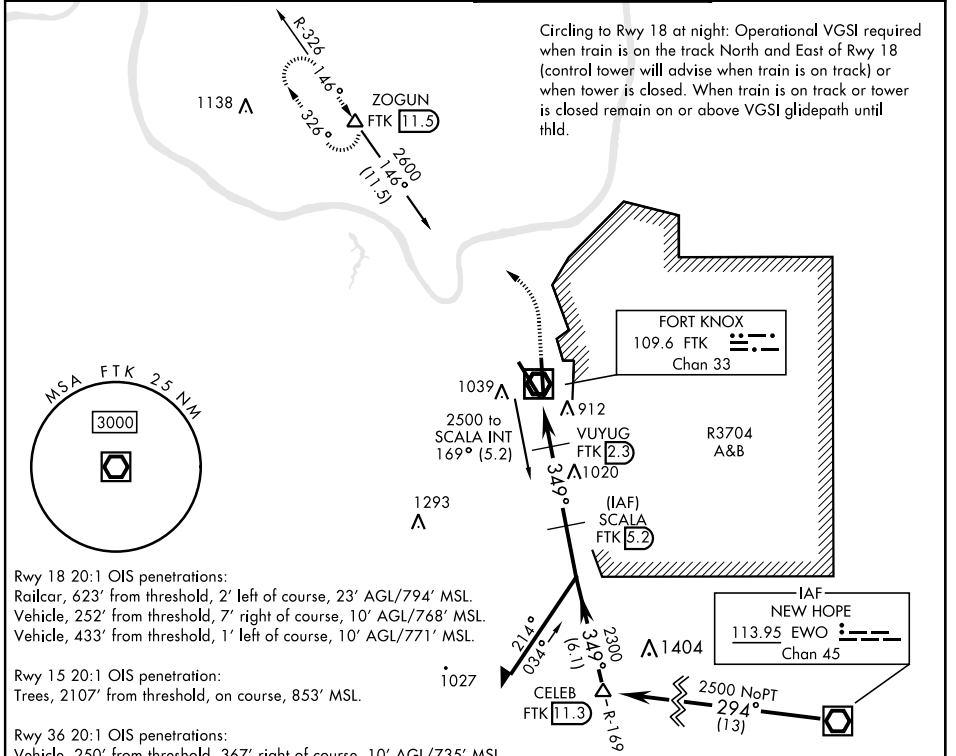
[USA]

GODMAN AAF (KFKT)

**▽** \* At night, operational VGSI required, remain on or above VGSI glidepath until threshold.  
Visibility reduction by helicopters not authorized.  
\*\* Circling NA E of Rwy 18-36. Circling to rwy 15 NA at night.

**ODALS**  
**MISSED APPROACH:** Climb to 1400, then climbing left turn to 2600 on FTK VOR/DME R-326 to ZOGUN INT/FTK 11.5 DME and hold.

ATIS <b>109.6</b>	LOUISVILLE APP CON <b>132.075 327.0</b>	TOWER ★ <b>133.35</b> (CTAF) <b>0</b>	GND CON <b>121.9 239.3</b>
----------------------	--	--	-------------------------------

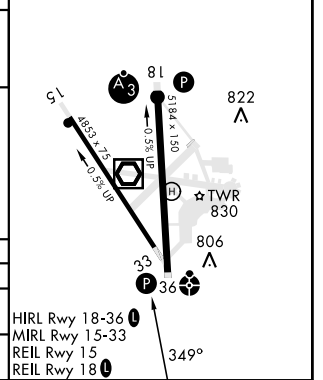
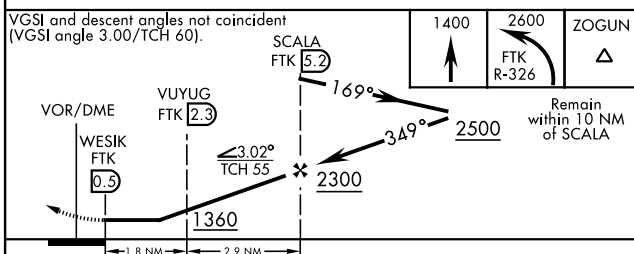


Circling to Rwy 18 at night: Operational VGSI required when train is on the track North and East of Rwy 18 (control tower will advise when train is on track) or when tower is closed. When train is on track or tower is closed remain on or above VGSI glidepath until thld.

SE-1, 15 MAY 2025 to 12 JUN 2025

SE-1, 15 MAY 2025 to 12 JUN 2025

ELEV	754	TDZE	740
------	-----	------	-----



CATEGORY	A	B	C	D
S-36*	1180-1 440 (500-1)		1180-1¼ 440 (500-1¼)	
CIRCLING**	1340-1 586 (600-1)		1340-1½ 586 (600-1½)	1340-2 586 (600-2)

HIRL Rwy 18-36 **0**  
MIRL Rwy 15-33  
REIL Rwy 15  
REIL Rwy 18 **0**

# VOR/DME RWY 36