

# RNAV (GPS) RWY 36

APCH CRS	Rwy Idg	5184
015°	TDZE	740
	Arprt Elev	754

AL-151 [USA]

GODMAN AAF (KF TK)

RNP APCH - GPS

ODALS

MISSED APPROACH: Climbing left turn to 2500 direct HONAL and hold.

▼ \* Straight-in Rwy 36 at night, operational VGSI required, remain on or above VGSI glidepath until threshold. When ALS inop, increase CAT CD vis to 1½ miles. Helicopter visibility reduction below 1 mile NA.

ATIS  
**109.6**

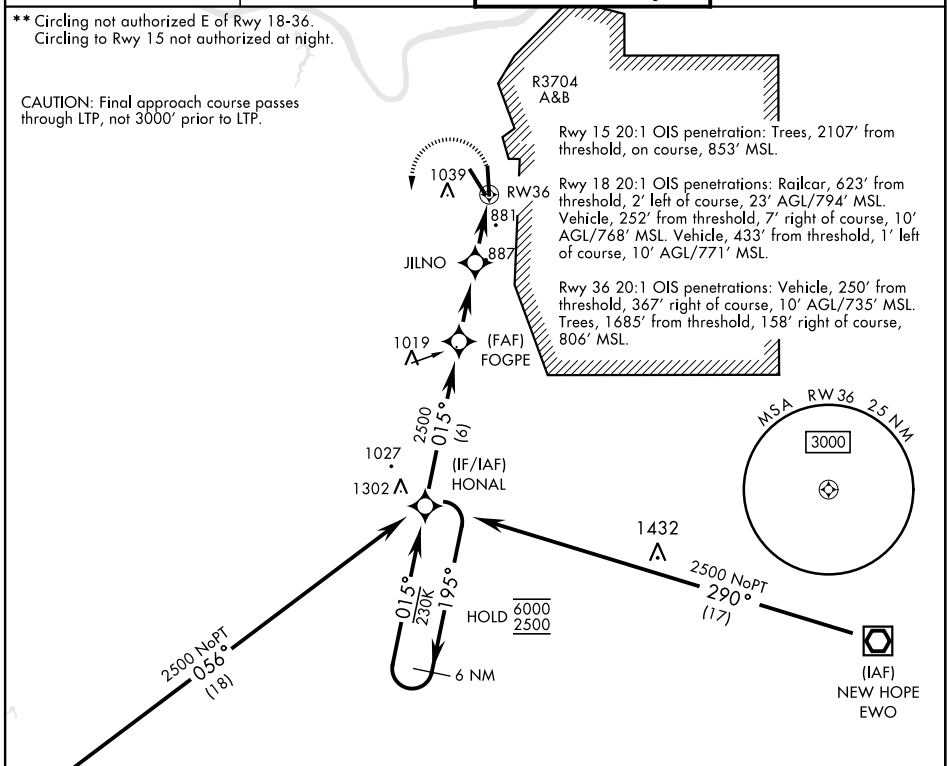
LOUISVILLE APP CON  
**132.075 327.0**

TOWER ★  
**133.35 (CTAF) 0**

GND CON  
**121.9 239.3**

\*\* Circling not authorized E of Rwy 18-36.  
Circling to Rwy 15 not authorized at night.

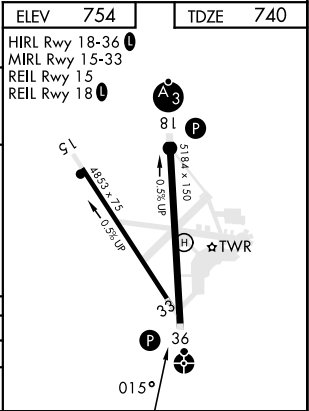
CAUTION: Final approach course passes through LTP, not 3000' prior to LTP.



SE-1, 15 MAY 2025 to 12 JUN 2025

SE-1, 15 MAY 2025 to 12 JUN 2025

ELEV 754		TDZE 740	
HIRL Rwy 18-36 0			
MIRL Rwy 15-33			
REIL Rwy 15			
REIL Rwy 18 0			
VGSI and descent angles not coincident.			
6 NM Holding Pattern		HONAL	
6000 2500		195° 015°	
3.00° TCH 55		2500	
FOGPE		JILNO	
1580		RW36	
2.9 NM		2.5 NM	
CATEGORY	A	B	D
LNAV MDA*	1240-1	500 (500-1)	1240-1¼ 500 (500-1¼)
CIRCLING**	1340-1	586 (600-1)	1340-2 586 (600-2)



# RNAV (GPS) RWY 36