

RNAV (GPS) RWY 15

APCH CRS	Rwy Idg	4853
151°	TDZE	754
	Arprt Elev	754

AL-151 [USA]

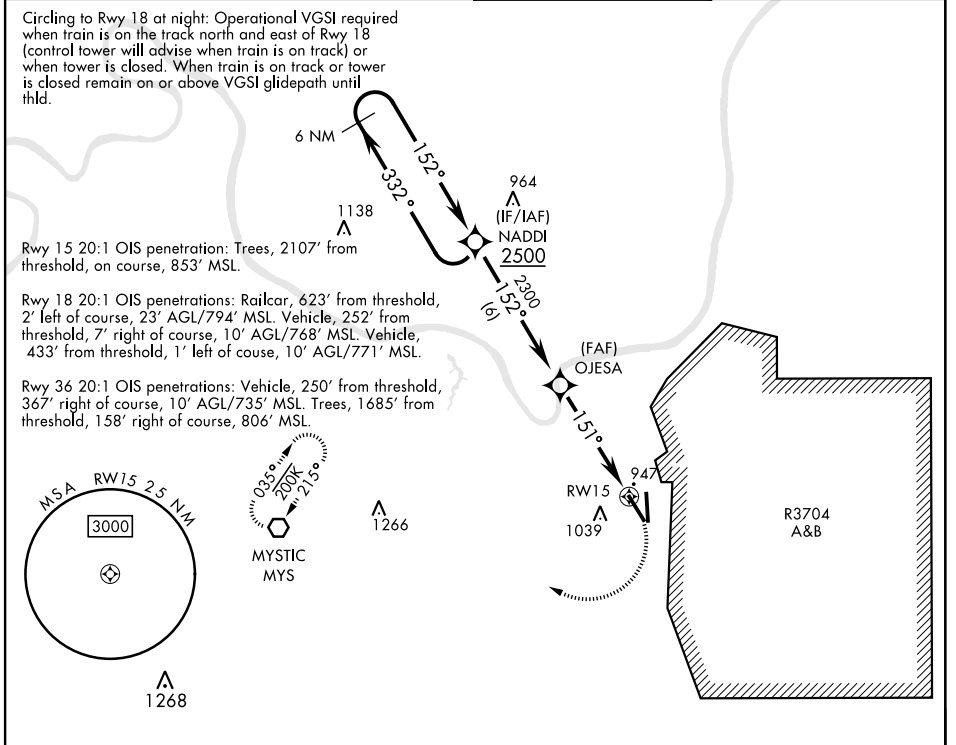
GODMAN AAF (KFTK)

RNP APCH - GPS

▼ *Straight-in minimums NA at night. Helicopter visibility reduction below 1 mile NA.
 ▼ **Circling not authorized E of Rwy 18-36. When circling to Rwy 36 at night, operational VGSI required, remain on or above VGSI glidepath until threshold.

MISSED APPROACH: Climbing right turn to 3000 direct MYS VOR and hold.

ATIS 109.6	LOUISVILLE APP CON 132.075 327.0	TOWER★ 133.35 (CTAF) 0	GND CON 121.9 239.3
----------------------	--	----------------------------------	-------------------------------



SE-1, 15 MAY 2025 to 12 JUN 2025

SE-1, 15 MAY 2025 to 12 JUN 2025

	ELEV	754	TDZE	754
6 NM Holding Pattern	NADDI	3000	MYS	
2500	152°	152°	OJESA	2300
		1.3 NM to RWY 15	RWY 15	3.00° TCH 45
		4.7 NM		
CATEGORY	A	B	C	D
RNAV MDA*	1260-1	506 (600-1)	1260-1 $\frac{3}{8}$	506 (600-1 $\frac{3}{8}$)
CIRCLING**	1340-1	586 (600-1)	1340-1 $\frac{1}{2}$	586 (600-2)

RNAV (GPS) RWY 15