

# TACAN RWY 23

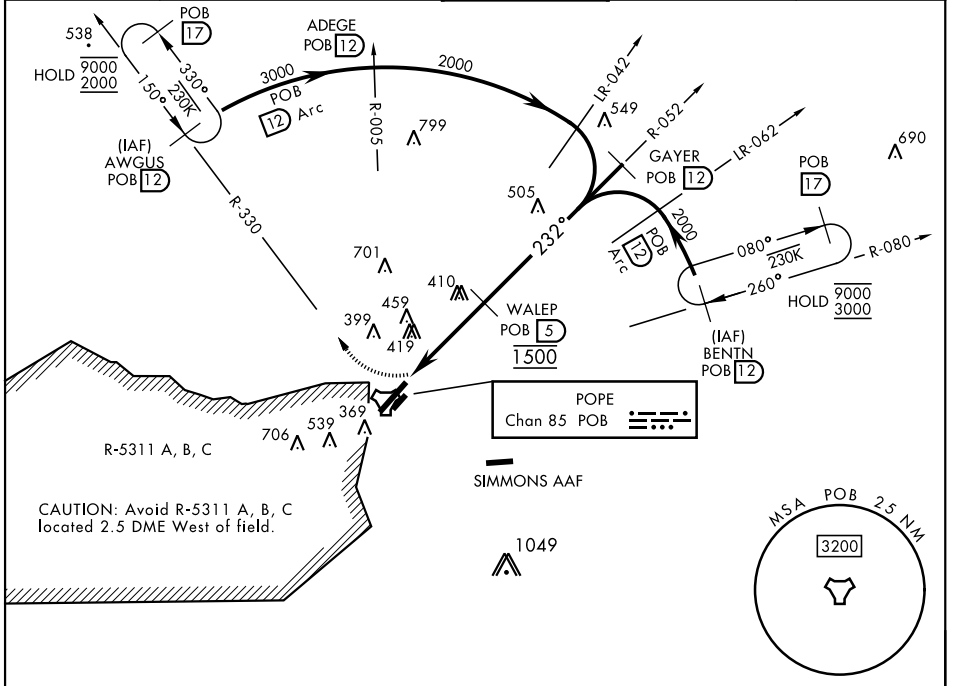
TACAN Chan <b>85</b>	APCH CRS <b>232°</b>	Rwy ldg TDZE Arprt Elev	<b>7501</b> <b>200</b> <b>225</b>
-------------------------	-------------------------	-------------------------------	---

[USAF]

POPE AAF (KPOB)

RADAR required	ALSF-1 	MISSED APPROACH: Climbing right turn to 2000 direct AWGUS and hold.
<p>▼ * When ALS inop, increase CAT AB RVR to 55 and vis to 1 mile; CAT CD vis to 1 3/8 miles.</p> <p>** Circling not authorized SE of Rwy 5-23.</p>		

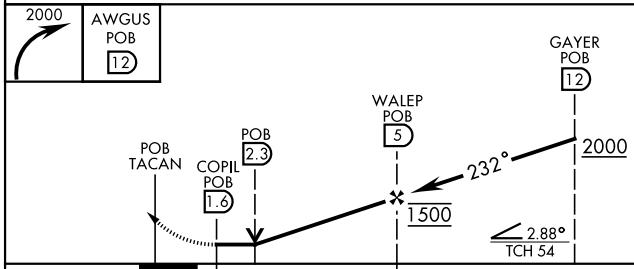
ATIS <b>132.3 353.725</b>	FAYETTEVILLE APP CON <b>125.175 285.575</b> (271°-090°) <b>133.0 290.25</b> (091°-270°)	TOWER <b>135.025 291.1</b>	GND CON <b>124.55 275.8</b>	CLNC DEL <b>124.55 275.8</b>
------------------------------	---	-------------------------------	--------------------------------	---------------------------------



SE-2, 15 MAY 2025 to 12 JUN 2025

SE-2, 15 MAY 2025 to 12 JUN 2025

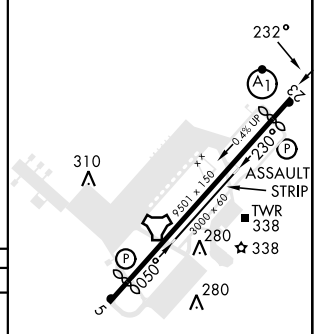
EMERG SAFE ALT 100 NM 5300



ELEV	225	TDZE	200
------	-----	------	-----

Rwy 05 ldg 7501'  
Rwy 23 ldg 7501'

CATEGORY	A	B	C	D
S-23 *	760/24 560 (600-1/2)		760/60 560 (600-1 1/2)	
CIRCLING **	760-1 542 (600-1)		920-2 702 (800-2)	1060-2 3/4 842 (900-2 3/4)



HIRL Rwy 5-23  
LURL Rwy 050°-230°  
REL Rwy 5

# TACAN RWY 23