

RNAV (GPS) RWY 33

WAAS CH 67545 W33A	APCH CRS 330°	Rwy ldg 9302 TDZE 227 Arpt Elev 227
--	-------------------------	--

[USA]

LAWSON AAF (KLSF)

RNP APCH-GPS

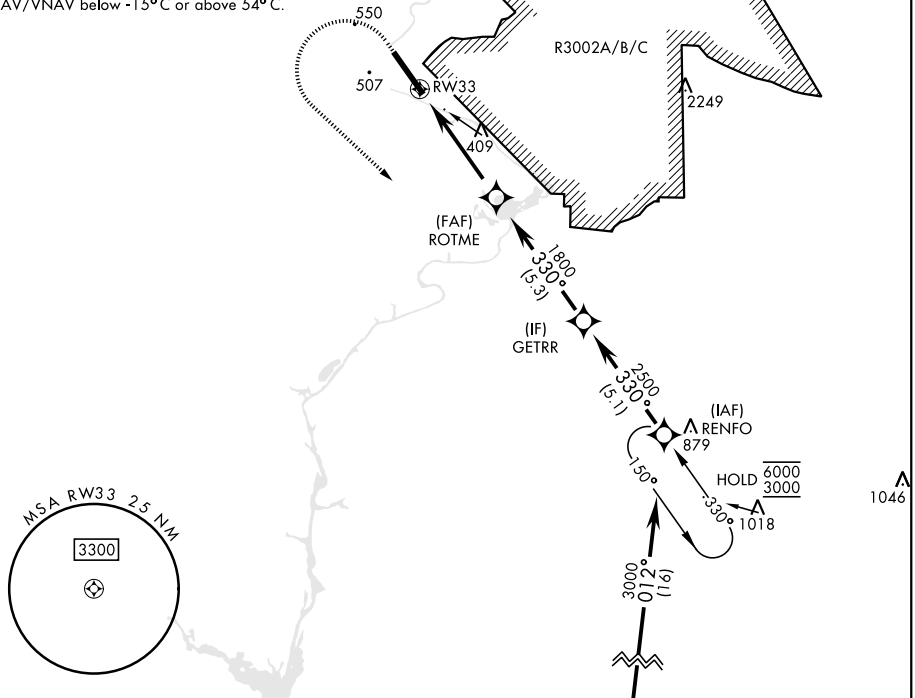
- ▼ *When ALS inop, increase vis to 1½ mile.
- **When ALS inop, increase CAT AB RVR to 55, vis to 1 mile; CAT CD vis to 1½ miles.
- *** Circling not authorized NE of Rwy 15-33. Not authorized when tower closed.



MISSED APPROACH: Climb to 800 then climbing left turn to 3000 direct RENFO and hold.

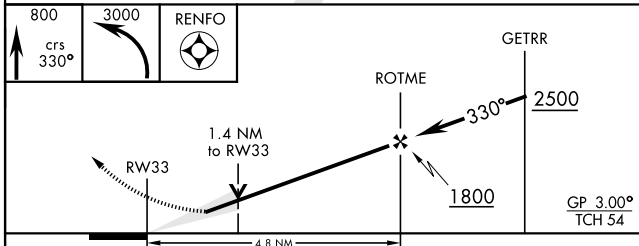
ATIS ★ 134.375	ATLANTA APP CON 125.5 323.1	TOWER 119.05 (CTAF) 269.525	GND CON 121.7 254.25	CLNC DEL 121.7 251.15
--------------------------	---------------------------------------	---------------------------------------	--------------------------------	---------------------------------

For uncompensated Baro-VNAV systems, LNAV/VNAV below -15°C or above 54°C.



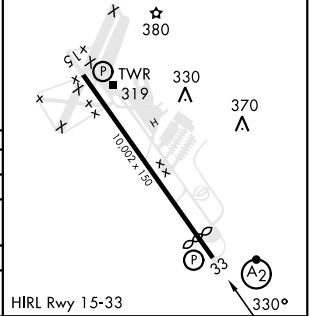
SE-4, 15 MAY 2025 to 12 JUN 2025

SE-4, 15 MAY 2025 to 12 JUN 2025



ELEV	227	TDZE	227
------	-----	------	-----

Rwy 33 ldg 9302'



CATEGORY	A	B	C	D
LPV DA	427/40	200	(200-¾)	
LNAV/VNAV DA*	701/60	474	(500-1½)	
LNAV MDA**	740/40 513 (600-¾)	740-1¼ 513 (600-1¼)		
*** CIRCLING	820-1	860-1	960-2	1080-2¾
	593 (600-1)	633 (700-1)	733 (800-2)	853 (900-2¾)

RNAV (GPS) RWY 33