

ILS or LOC RWY 33

LOC I-LSF 110.7	APCH CRS 327°	Rwy ldg TDZE Arpt Elev 9302 227 227
---------------------------	-------------------------	---

[USA]

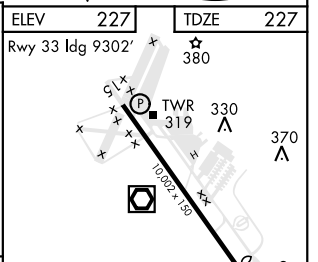
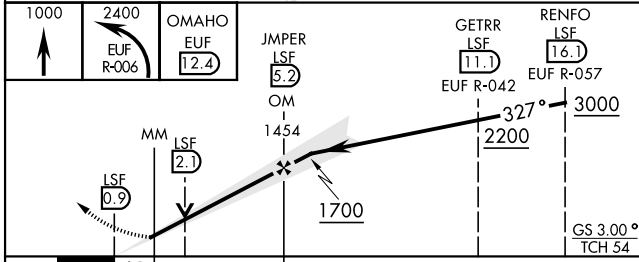
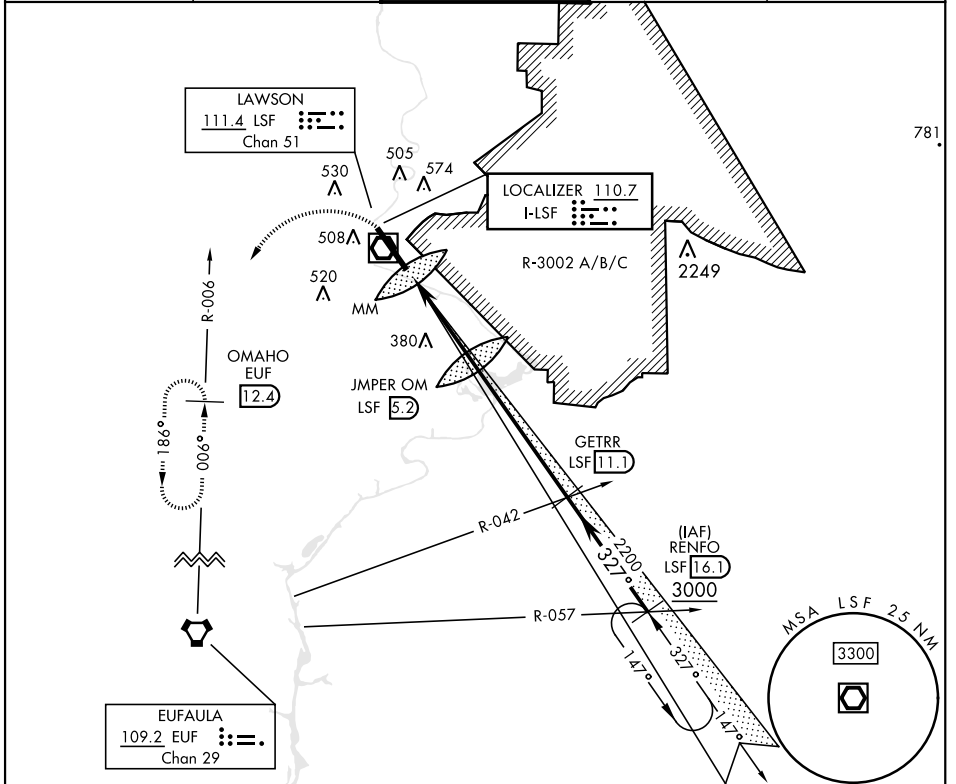
LAWSON AAF (KLSF)

▼ * Circling not authorized E of Rwy 15-33.
Not authorized when tower closed.



MISSED APPROACH: Climb to 1000 then climbing left turn to 2400 via EUF R-006 to OMAHO INT/EUF 12.4 DME and hold.

ATIS ★ 134.375	ATLANTA APP CON 125.5 323.1	TOWER 119.05 (CTAF) 269.525	GND CON 121.7 254.25	CLNC DEL 121.7 251.15
--------------------------	---------------------------------------	--	--------------------------------	---------------------------------



CATEGORY	A		B		C		D	
S-ILS 33	426/24	200	(200-½)		426/40	200	(200-¾)	
S-LOC 33	640/40	414	(500-¾)		640/50	414	(500-1)	
CIRCLING*	820-1	593	(600-1)		840-1 ¾	880-2	(700-2)	
					613 (700-1 ¾)	653 (700-2)		

HIRL Rwy 15-33	FAF to MAP 4.4 NM				
Knots	60	90	120	150	180
Min:Sec	4:24	2:56	2:12	1:46	1:28

ILS or LOC RWY 33

SE-4, 15 MAY 2025 to 12 JUN 2025

SE-4, 15 MAY 2025 to 12 JUN 2025