

YERIN-EIGHT DEPARTURE (YERIN8 • YERIN)

FALLON NAS (VAN VOORHIS FLD) (KNFL)

FALLON, NEVADA

ATIS 370.925 ★
 CLNC DEL
 353.55
 GND CON
 251.15
 NAVY FALLON TOWER ★
 119.25 340.2
 NAVY FALLON APP/DEP CON
 120.85 360.2

TOP ALTITUDE
15,000

AL-143 [USN]

FALLON MUNI

CAUTION: Fallon Muni Airport (uncontrolled)
 5 NM NW Pattern alt 800 AGL.

Acft unable to make
 ATC climb gradient
 advise ATC prior to
 departure.

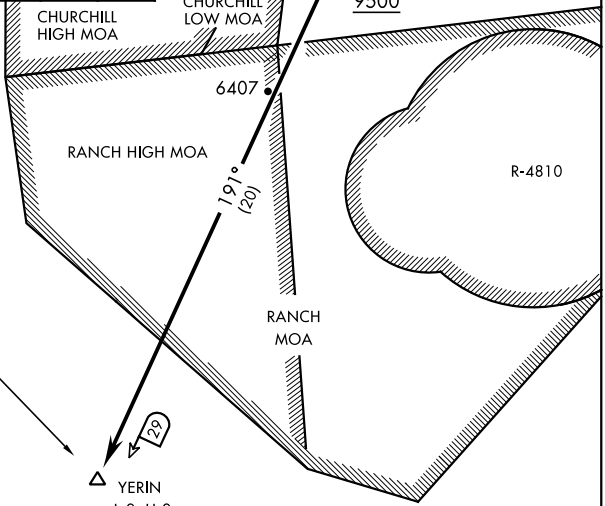
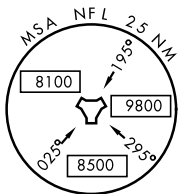
FALLON
 Chan 82 NFL

Rwy	Knots	60	120	180	240	300	360
* 7 (a) V/V(fpm)		215	430	645	860	1075	1290
† 7 (b) V/V(fpm)		527	1054	1581	2108	2635	3162
* 13L (a) V/V(fpm)		232	464	696	928	1160	1392
† 13L (b) V/V(fpm)		582	1164	1746	2328	2910	3492
* 13R (a) V/V(fpm)		235	470	705	940	1175	1410
† 13R (b) V/V(fpm)		593	1186	1779	2372	2965	3558
* 25 (a) V/V(fpm)		238	476	714	952	1190	1428
† 25 (b) V/V(fpm)		606	1212	1818	2424	3030	3636
* 31L (a) V/V(fpm)		461	922	1383	1844	2305	2766
† 31L (b) V/V(fpm)		457	914	1371	1828	2285	2742

* Minimum Military and Civil † ATC Climb Rate

- (a) to 7200
- (b) to 9500

MUSTANG
 117.9 FMG
 Chan 126



EMERG SAFE ALT 100NM 15,600

DEPARTURE ROUTE DESCRIPTION

TAKE-OFF RWY 7: Turn right hdg 236° to intercept NFL TACAN R-191 to YERIN. Cross FITNU at or above 9500. Do not exceed 250 KIAS until intercepting NFL R-191.

TAKE-OFF RWY 13L/R: Climbing right turn hdg 236° to intercept NFL R-191 to YERIN. Cross FITNU at or above 9500. Do not exceed 250 KIAS until intercepting NFL R-191.

TAKE-OFF RWY 25: Climbing left turn hdg 146° to intercept NFL R-191 to YERIN. Cross FITNU at or above 9500. Do not exceed 250 KIAS until intercepting NFL R-191.

TAKE-OFF RWY 31L/R: Climb to 4500 via heading 311°, then climbing right turn to NFL TACAN, intercept NFL R-191 to YERIN. Do not exceed 250 KIAS until NFL TACAN. Cross FITNU at or above 9500.

YERIN-EIGHT DEPARTURE (YERIN8 • YERIN)

FALLON, NEVADA

Orig 24MAR22

FALLON NAS (VAN VOORHIS FLD) (KNFL)

SW-4, 15 MAY 2025 to 12 JUN 2025

SW-4, 15 MAY 2025 to 12 JUN 2025